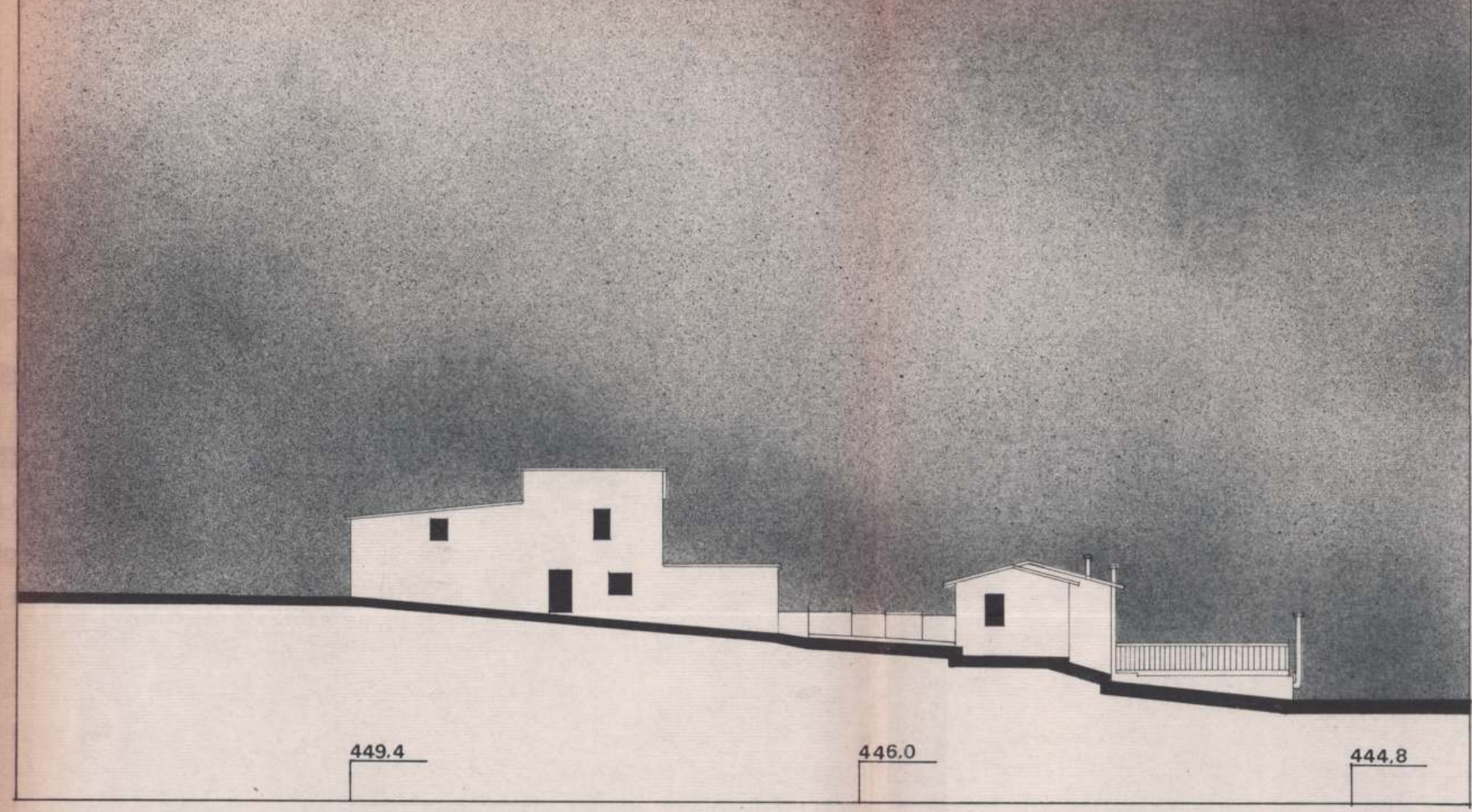
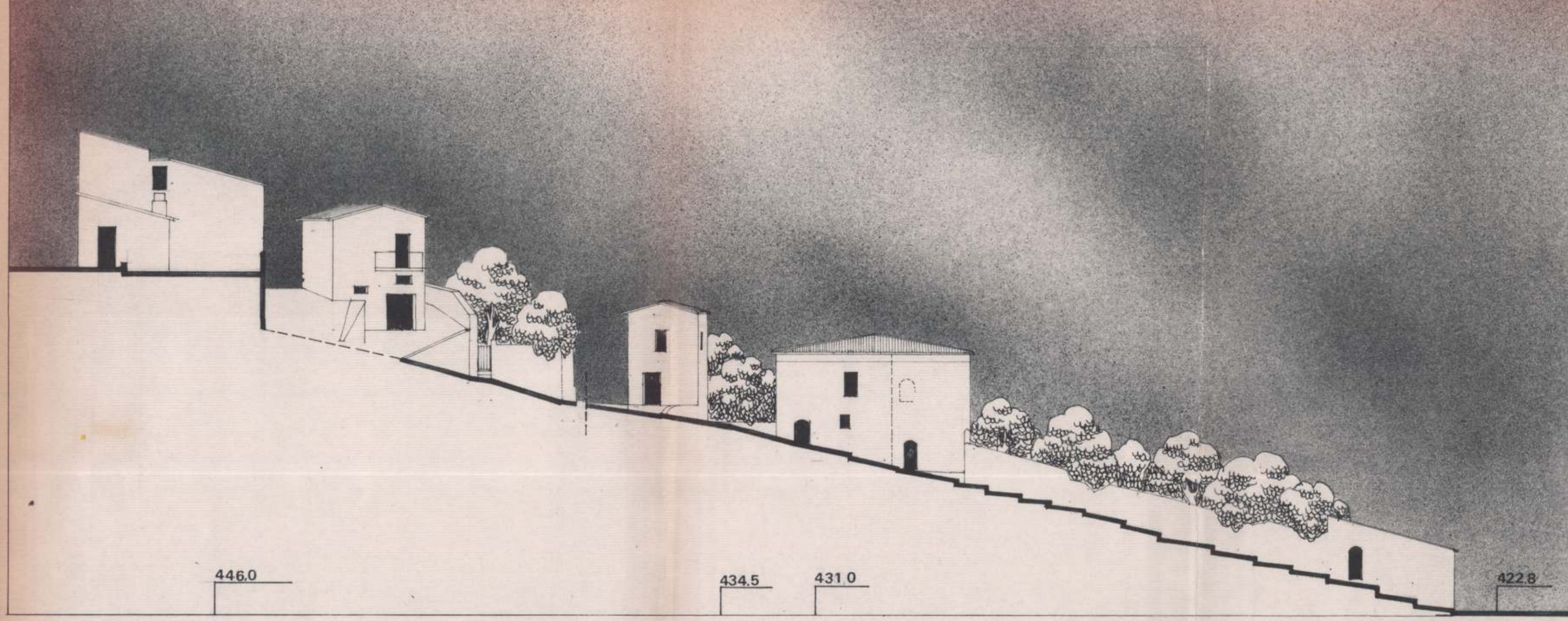


H-H



F-F



PDR

APPROVATO CON DELIBERA C.C.
N. 166 del 07/04/1983

FRAZIONE DI CANCELLARA

RILIEVO DELLO STATO ATTUALE

6

SEZIONI F, G, H, I



architetti:
P. BATTONI, L. CIANCALEONI, S. GATTI,
M. MAZZOLINI, con R. BUONCRISTIANI,
P. RIOMMI, M. POLZONI

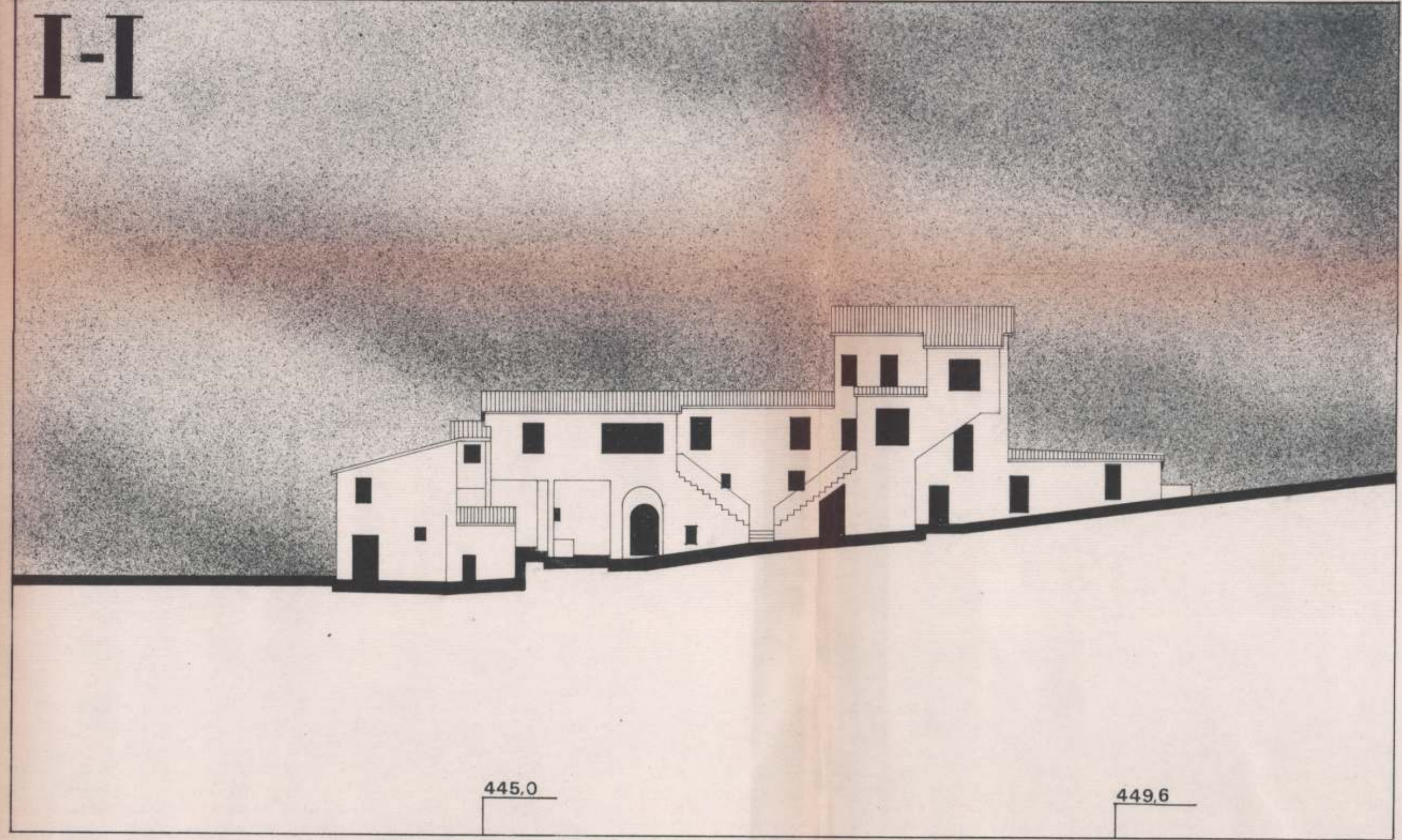
SCALA 1:200

DATA

N. PROT.

N. ORD.

I-I



G-G

