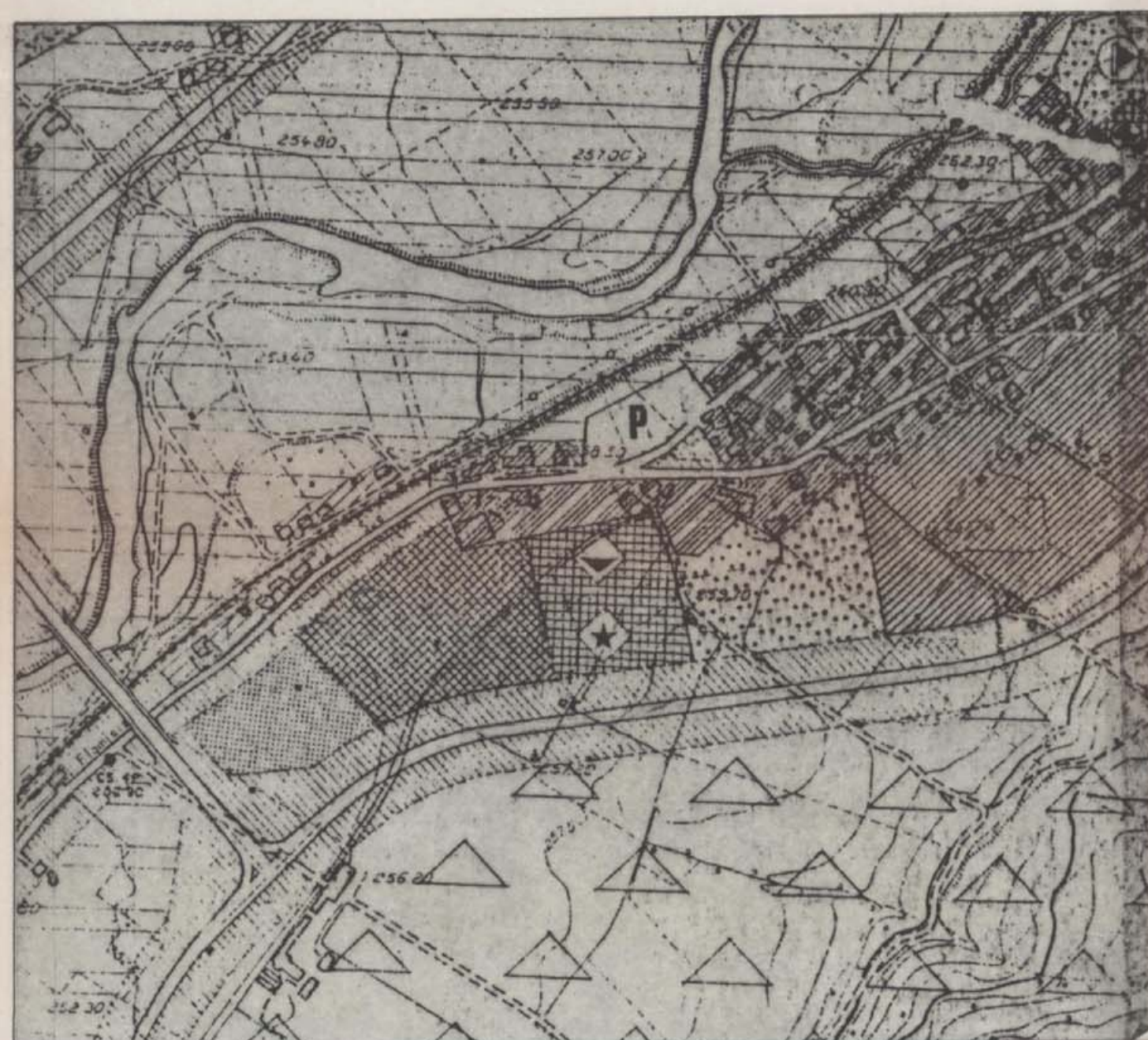
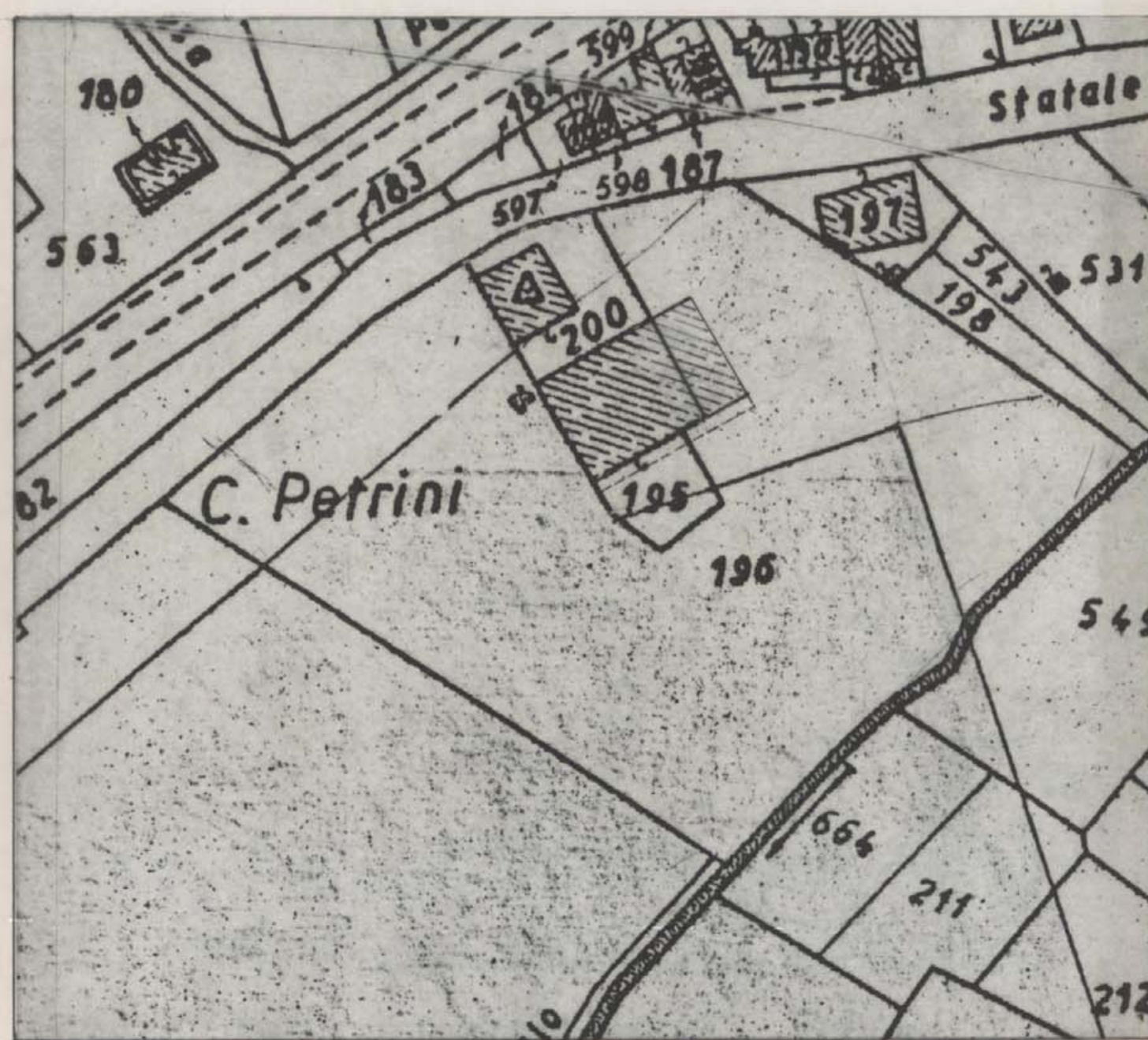


PLANIMETRIA CATASTALE scala 1:2000 FOGLIO 106 PART. 195-196-200



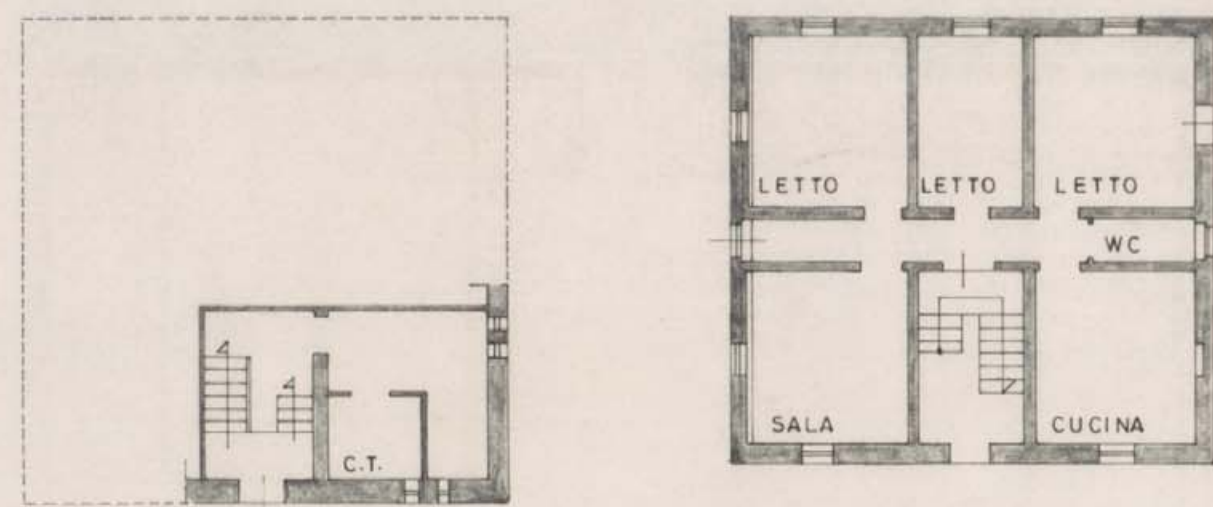
ESTRATTO PRG scala 1:5000 ZONA BS2-C3



SOVRAPPOSIZIONE DELLE PREVISIONI DI PRG SUL CATASTALE 1:2000

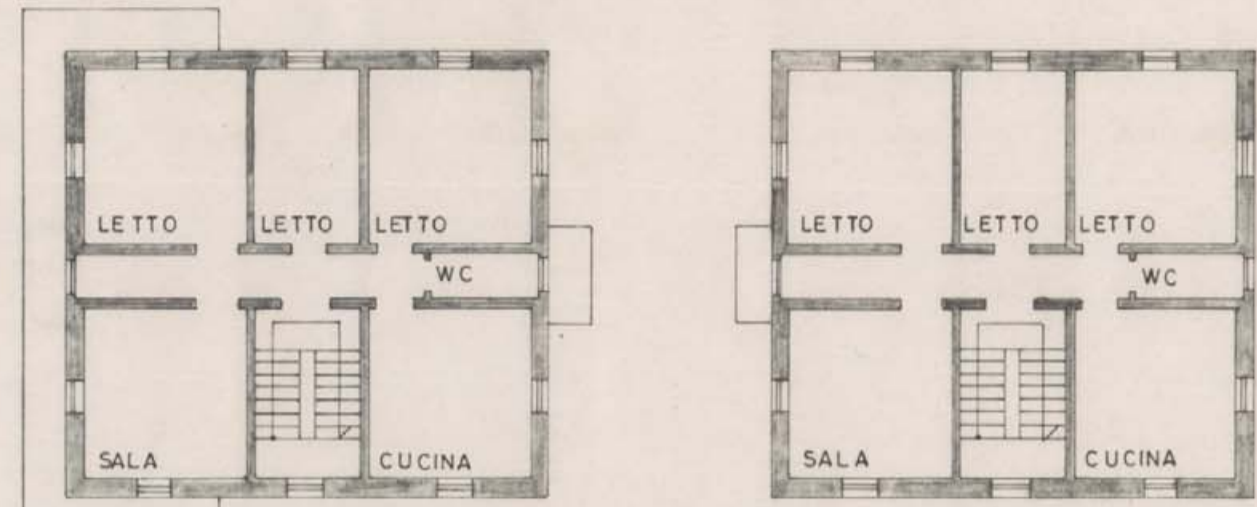
CORPO B

1:200



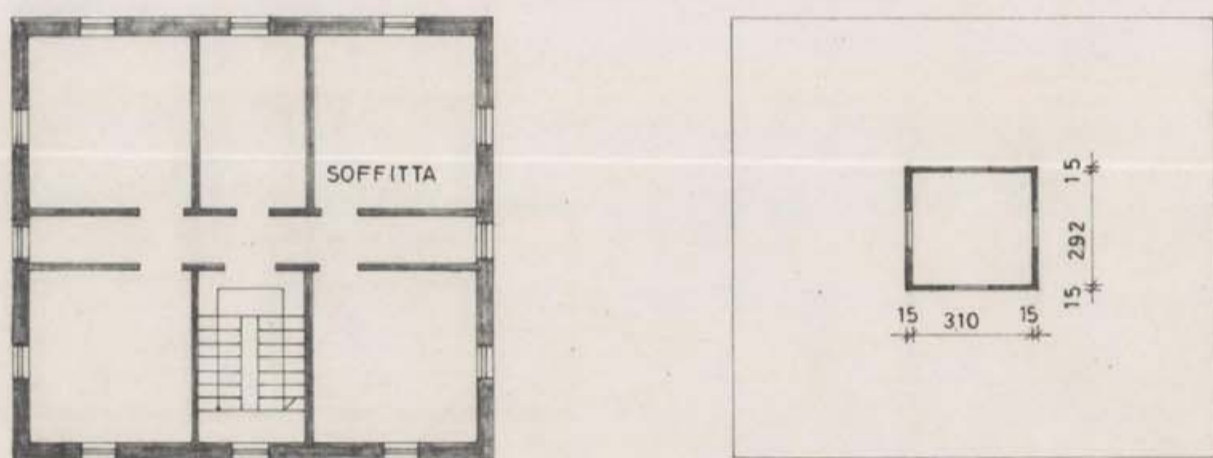
PIANO SCANTINATO

PIANO TERRA



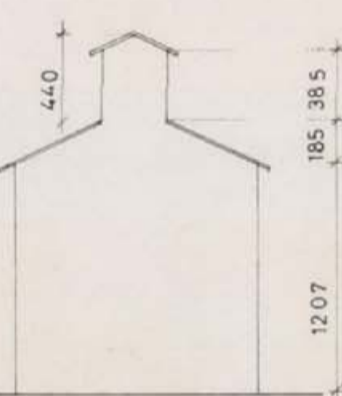
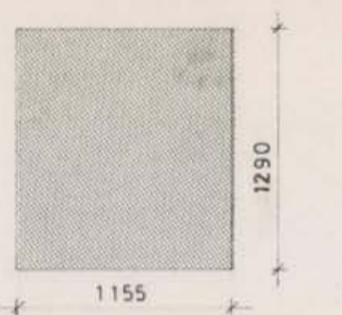
PIANO PRIMO

PIANO SECONDO



PIANO TERZO

TORRE

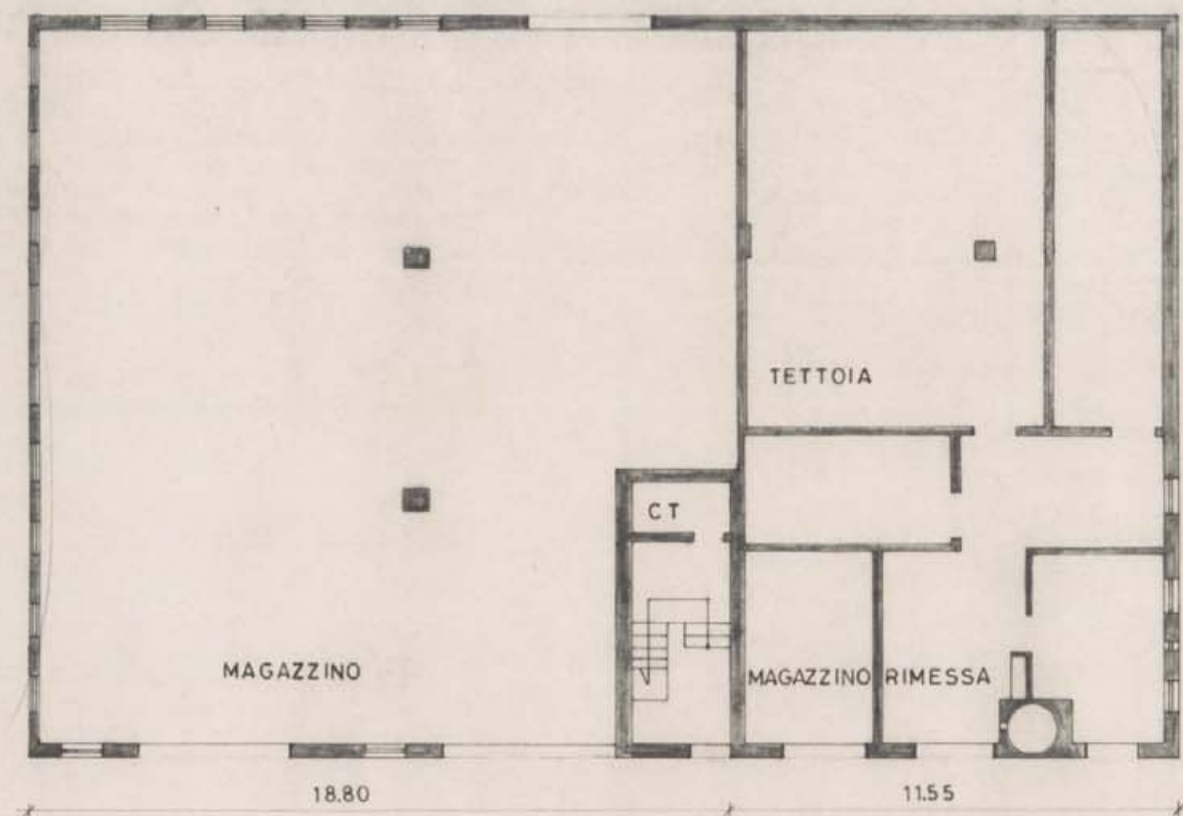


TAB 1
CALCOLO DEL VOLUME ATTUALE DA DEMOLIRE RESIDUO.

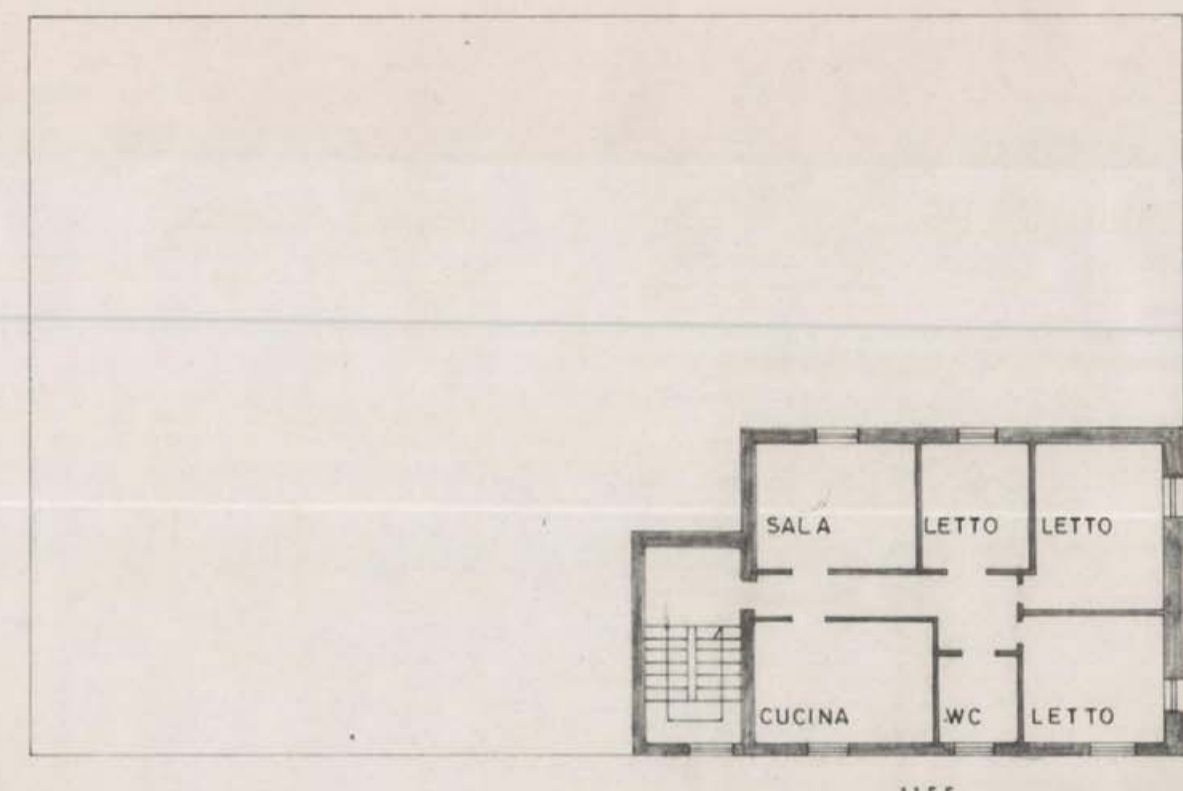
DESTINAZIONE	S.C.	ALTEZZA	VOLUME
MAGAZZINO CORPO A	1880 x 335	(442 + 619) / 2 ml	334.11 mc
MAGAZZINO "	1880 x 335	(619 + 463) / 2 ml	340.72 mc
MAGAZZINO "	1880 x 330	(463 + 623) / 2 ml	336.88 mc
MAGAZZINO "	1880 x 320	(623 + 476) / 2 ml	330.58 mc
MAGAZZINO "	1880 x 305	(476 + 625) / 2 ml	315.66 mc
MAGAZZINO "	1880 x 340	(625 + 470) / 2 ml	349.96 mc
TOTALE			2007.91 mc
TETTOIA "	1155 x 475	(643 + 455) / 2 ml	301.19 mc
TETTOIA "	1155 x 600	(455 + 310) / 2 ml	265.07 mc
TOTALE			566.26 mc
ABITAZIONE "	1155 x 880	635 ml	645.41 mc
ABITAZIONE CORPO B	1155 x 1290	1207 ml	1798.31 mc
SOFFITTA "	1155 x 490	185 / 2 ml	52.35 mc
SOFFITTA "	1155 x 310	185 ml	6.623 mc
SOFFITTA "	1155 x 490	185 / 2 ml	52.35 mc
TORRE "	292 x 155	(385 + 440) / 2 ml	18.69 mc
TORRE "	292 x 155	(385 + 440) / 2 ml	18.69 mc
TOTALE VOL. ATTUALE			5226.20 mc
VOLUME DEMOL.			2574.17 mc
VOLUME RESIDUO			2652.03 mc

CORPO A

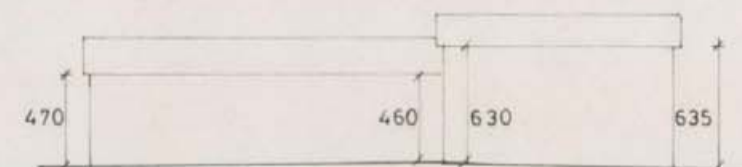
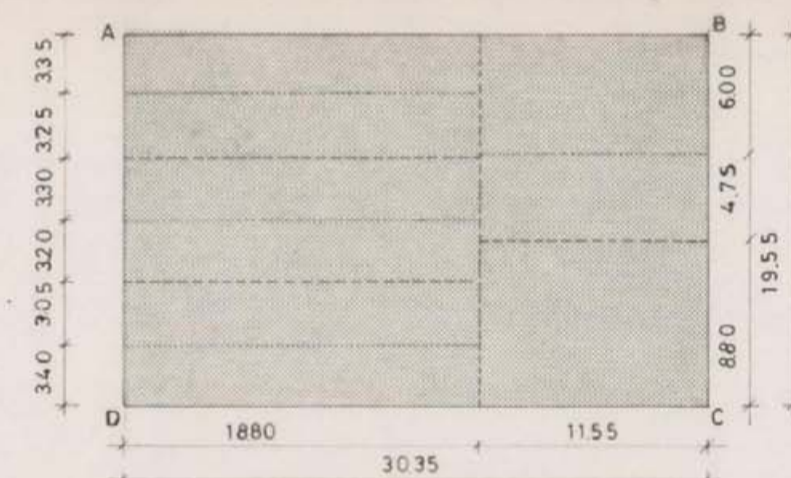
1:200



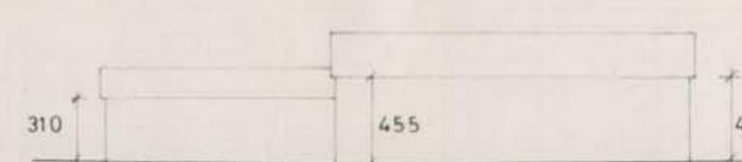
PIANO TERRA



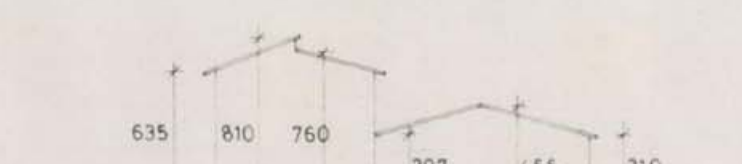
PIANO PRIMO



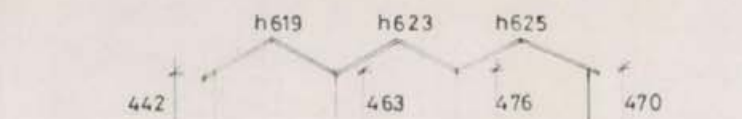
SCHEMA D.C.



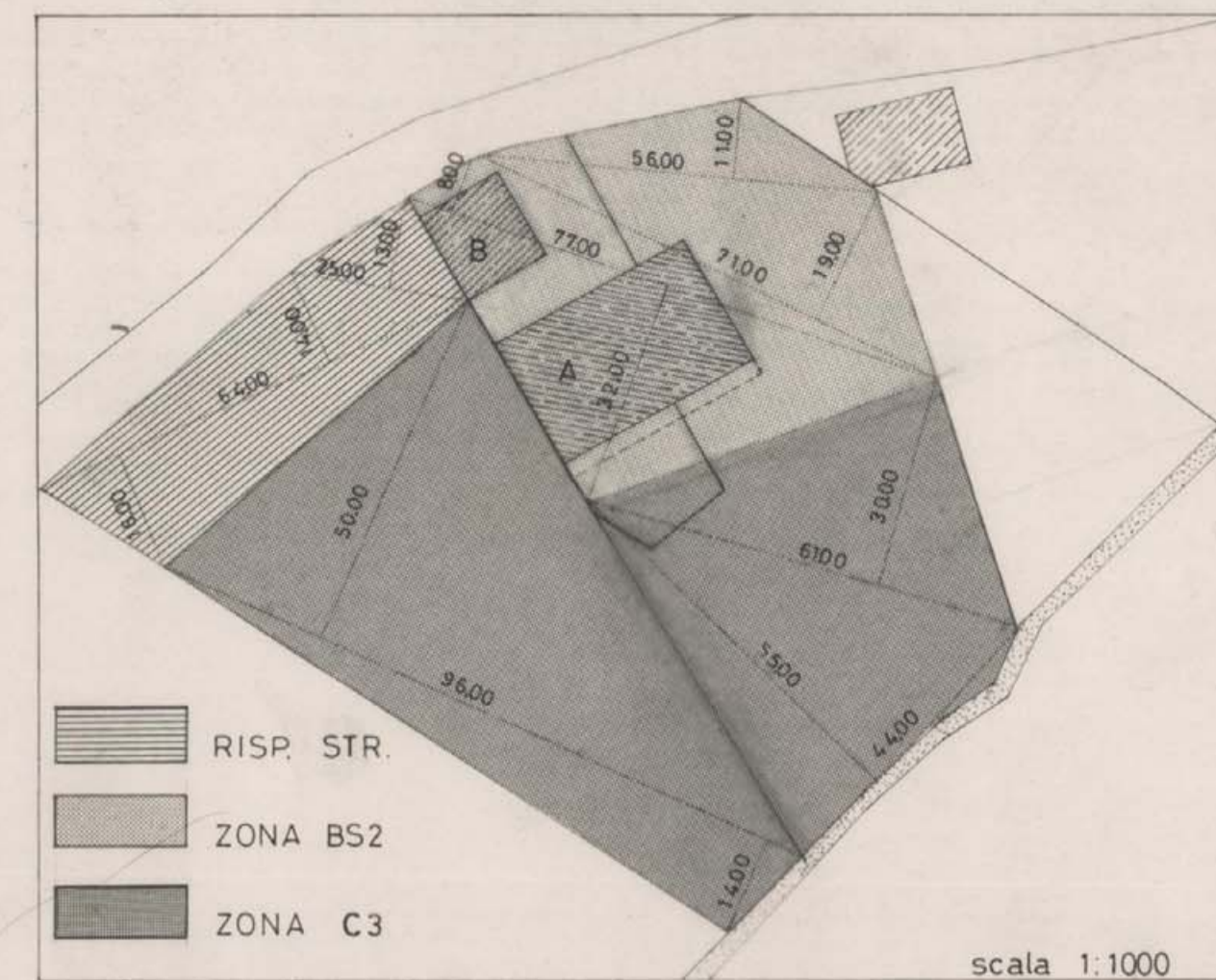
SCHEMA A.B.



SCHEMA B.C.



SCHEMA A.D.



TAB. 2
COMPUTO AREE EDIFICABILI E VOLUMI

ZONA	SUP	INDICE	VOLUME
BS2	(77.00 x 32.00) / 2	1232	
	(77.00 x 8.00) / 2	308	
	(71.00 x 19.00) / 2	674.5	
	(56.00 x 11.00) / 2	308	
TOTALE	2522.5	2	5045
C3	(9.600 x 5.000) / 2	24.00	
	(9.600 x 14.00) / 2	672	
	(4.400 x 5.500) / 2	1210	
	(6.100 x 3.000) / 2	915	
TOTALE	5197	1.5	7795.5
RISPETTO S.	(6.400 x 16.00) / 2	512	
	(6.400 x 14.00) / 2	448	
	(25.00 x 13.00) / 2	162.5	
TOTALE	1122.5		
TOTALE	8842		12840.5

VOLUME EDIFICABILE RESIDUO
12840,5 mc(TAB 2) - 265203 mc(TAB 1)= 10188,47 mc

Approvato CON DELIBERA C.C. N. 124 del 20.3.90

COMUNE DI FOLIGNO - URBANISTICA
ESAMINATO CON PARERE FAVOREVOLE E RELATIVE CONDIZIONI
DALLA COMMISSIONE URBANISTICA NELLA SEDUTA DEL 1.3.90

Comune di Foligno

PROGETTO:
LOTTIZZAZIONE CONVENZIONATA
A VESCIA DI FOLIGNO
COMPARTO DI PRG ZONA C3 ZONA BS2
PROP.:
PETRINI GIUSEPPE
PETRINI GIOVANNI
PREVISIONE DI PRG
DATI METRICI

Tav. 1

data Luglio 89

IL PROGETTISTA ING. M. BOCCI GEOM. A. CHIARIOTTI

A1-43

