

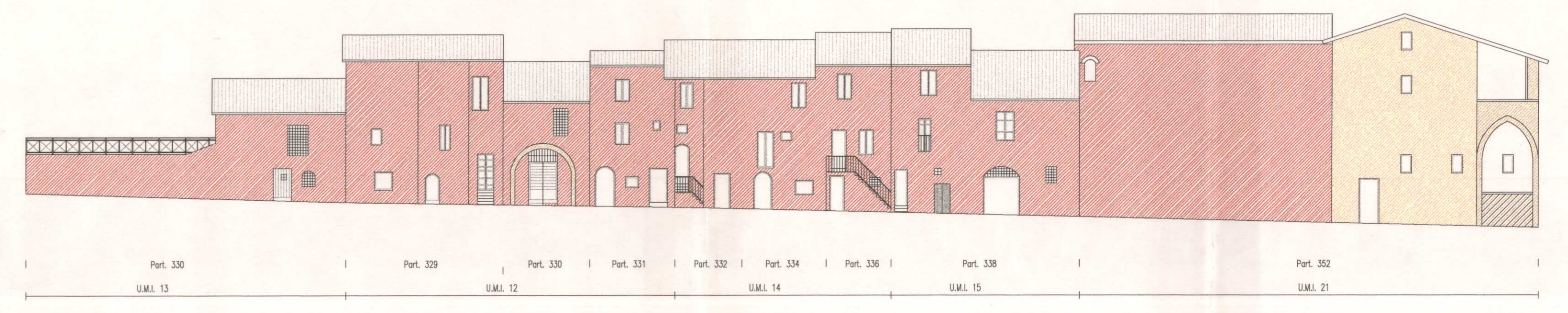
APPROVATO CON DELIBERA N. 24 del 04.04.99



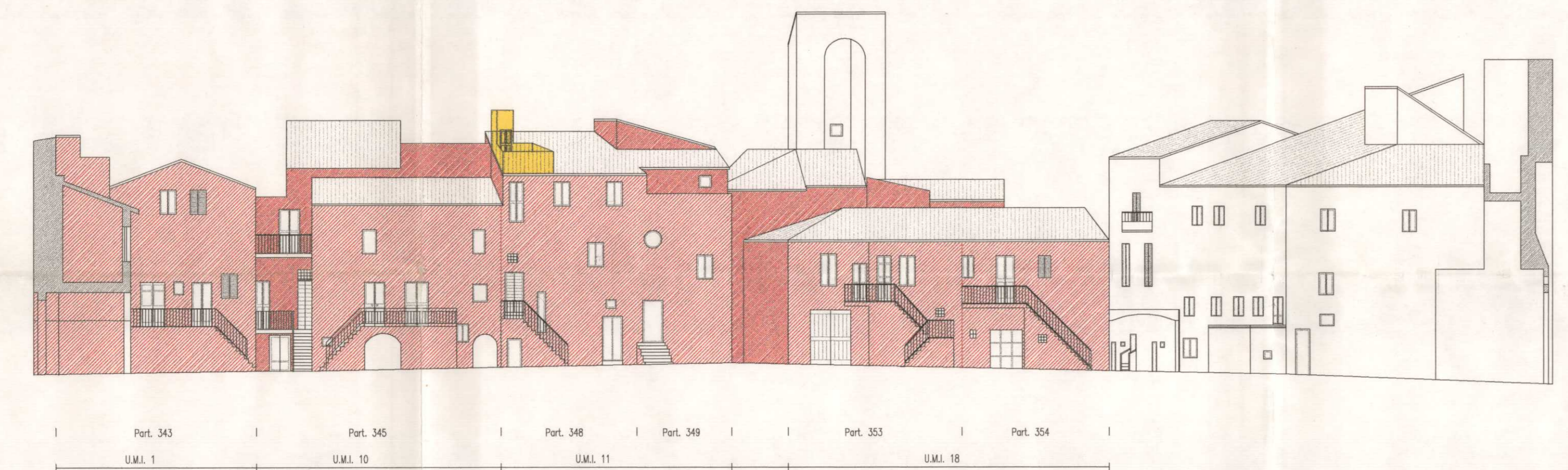
PIAZZA TORRE



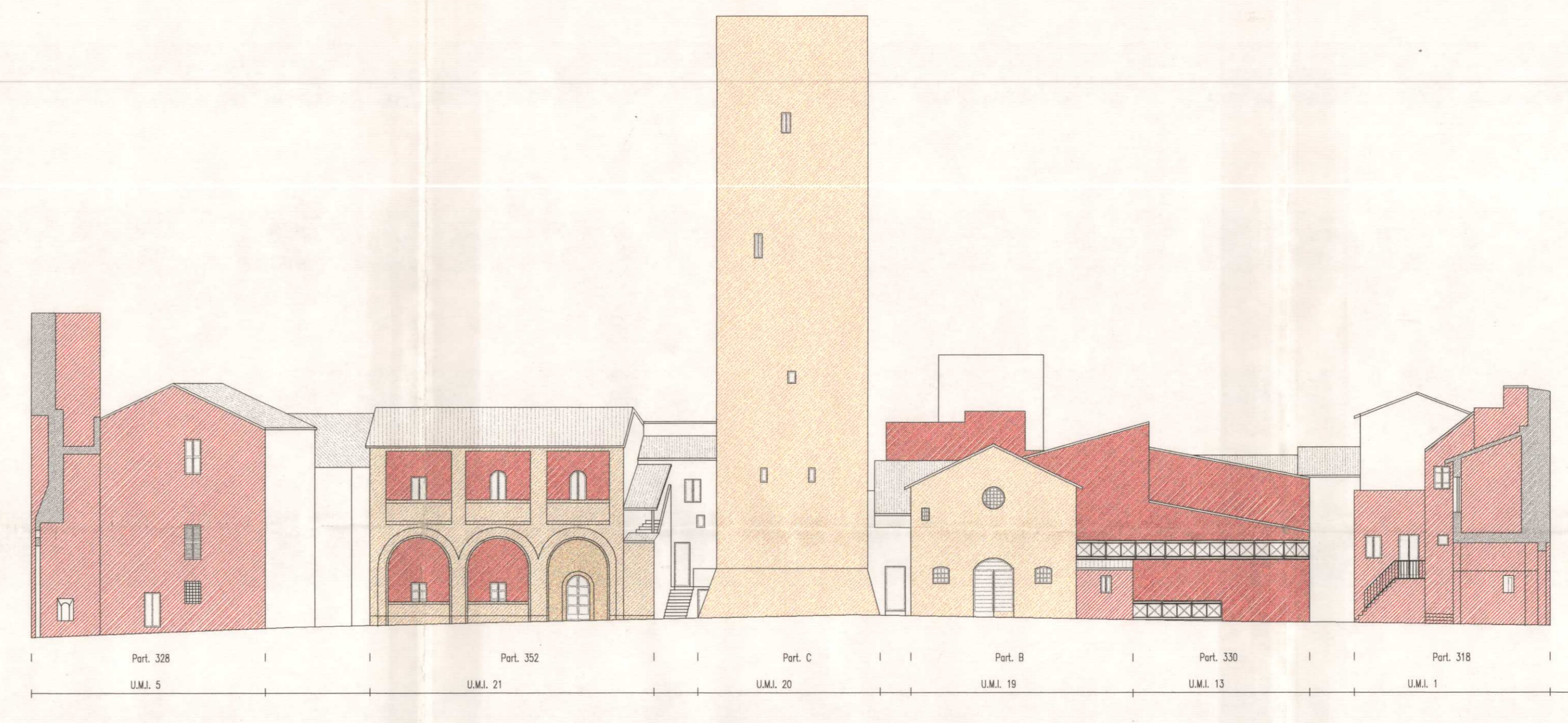
PROSPETTO F-F



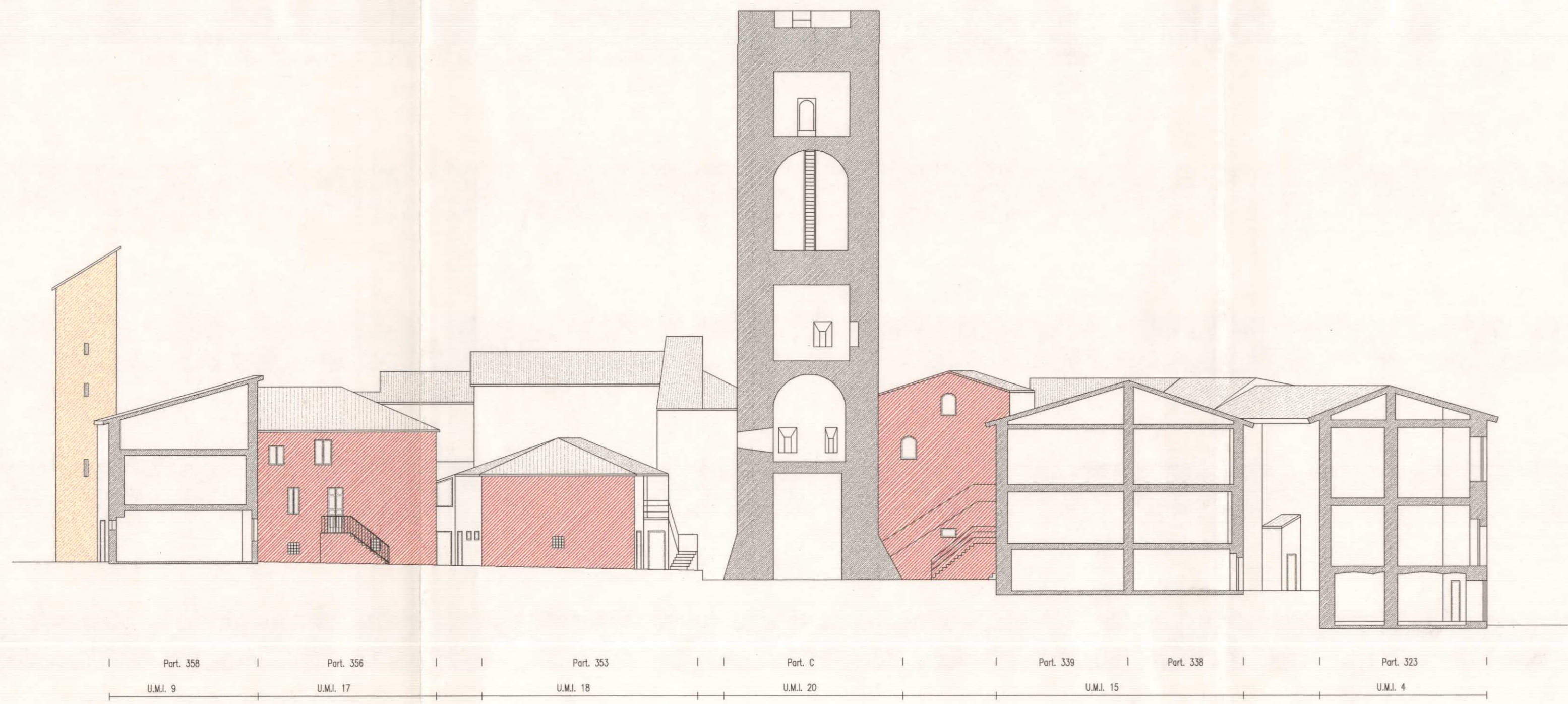
PROSPETTO E-E



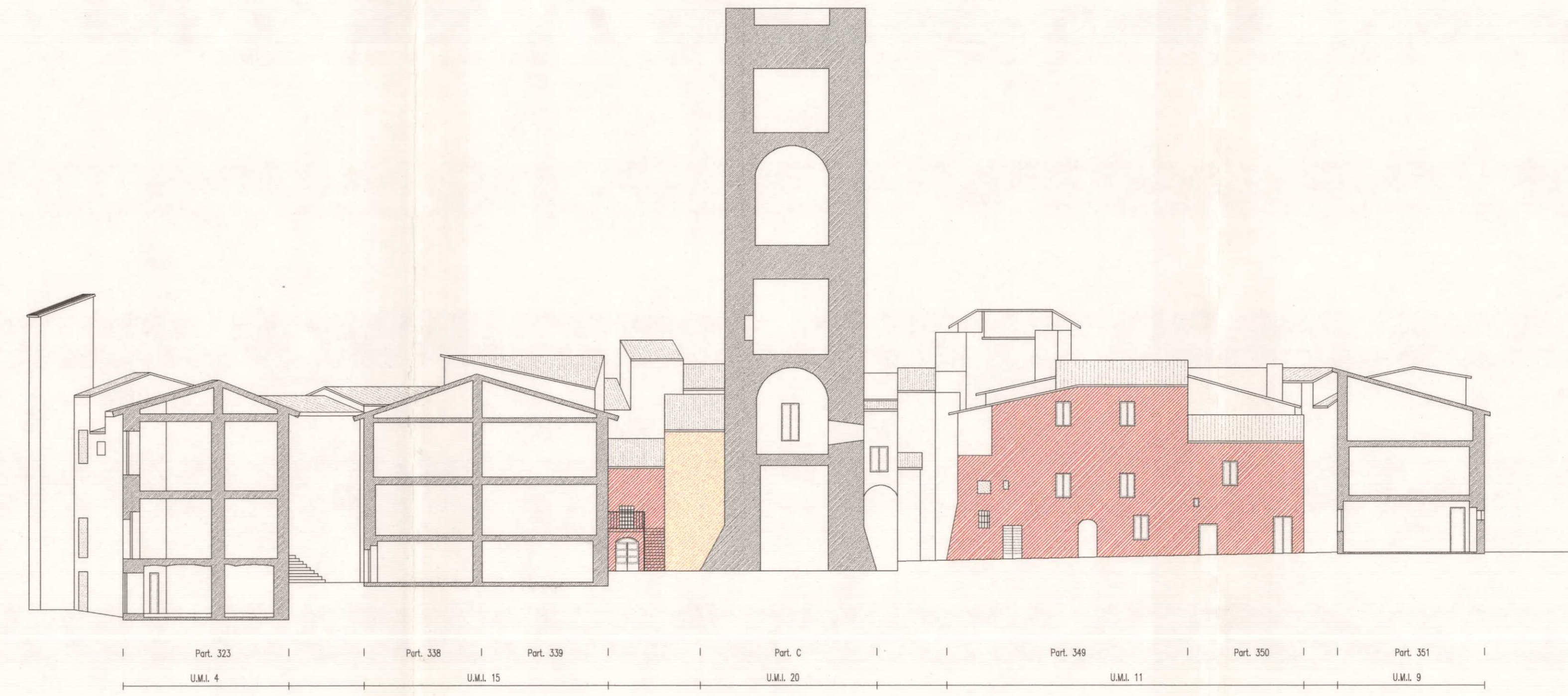
VIA DEL CASTELLO SEZIONE H - H



VIA DEL CASTELLO SEZIONE G - G



PROSPETTO I - I



SEZIONE L - L

legenda

A) PARAMENTO MURARIO

- 1 PIETRA STUCCATA RASO SASSO
- 2 INTONACO DI CALCE
- 3 MATTONE

B) DEMOLIZIONE

-