

Comune di Foligno

PROVINCIA DI PERUGIA

PIANO ATTUATIVO DI INIZIATIVA PRIVATA DI UN COMPARTO CLASSIFICATO CON Z.T.O. UC/ERM SITO IN LOC. CURASCI

STATO ATTUALE

TAVOLA: **01** OGGETTO:

FILE:

REV.: 0 RED.: CAROLI CONTR.: CAROLI APPR.: CAROLI PRIMA EMISSIONE: **NOVEMBRE 2012** REVISIONE:

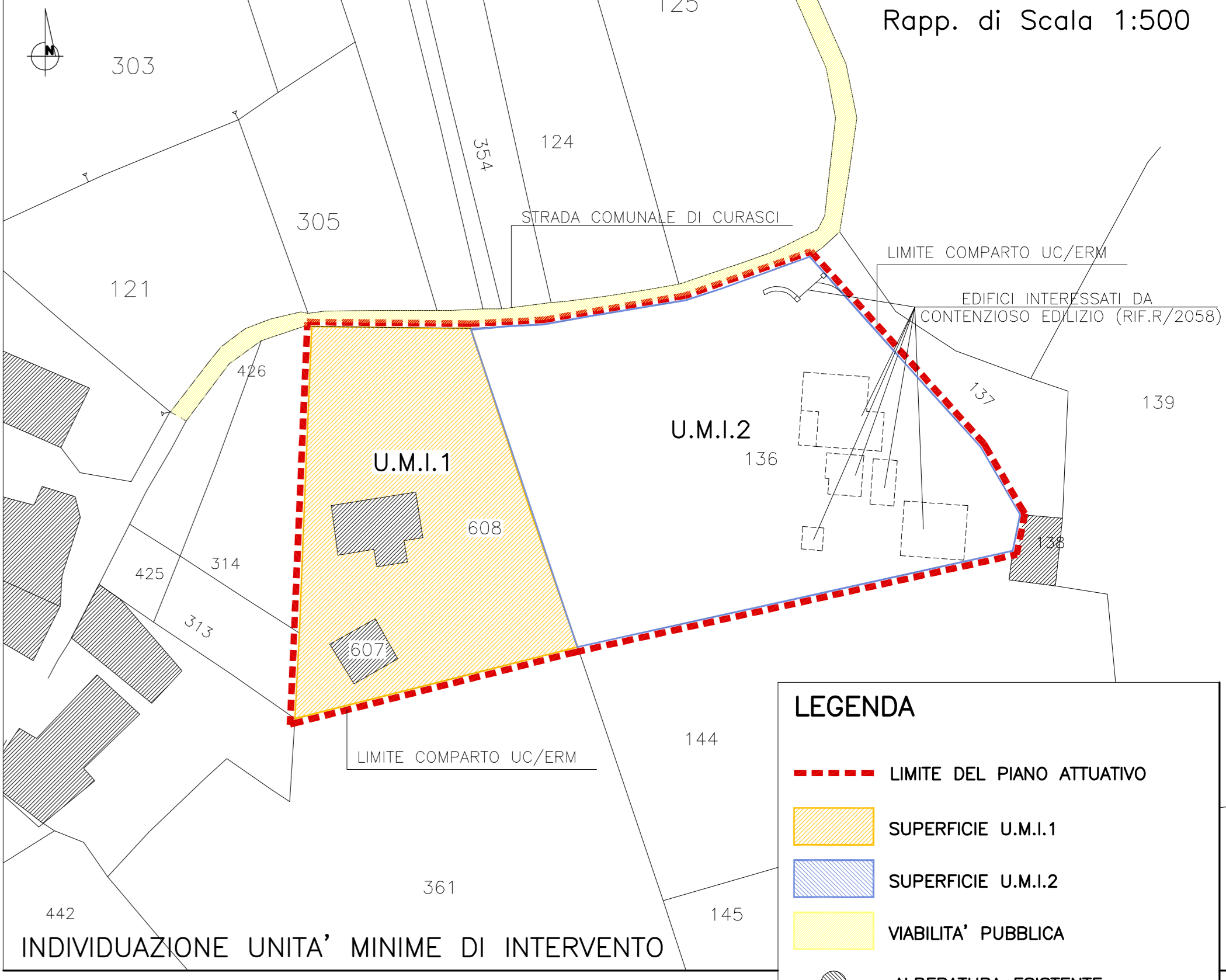
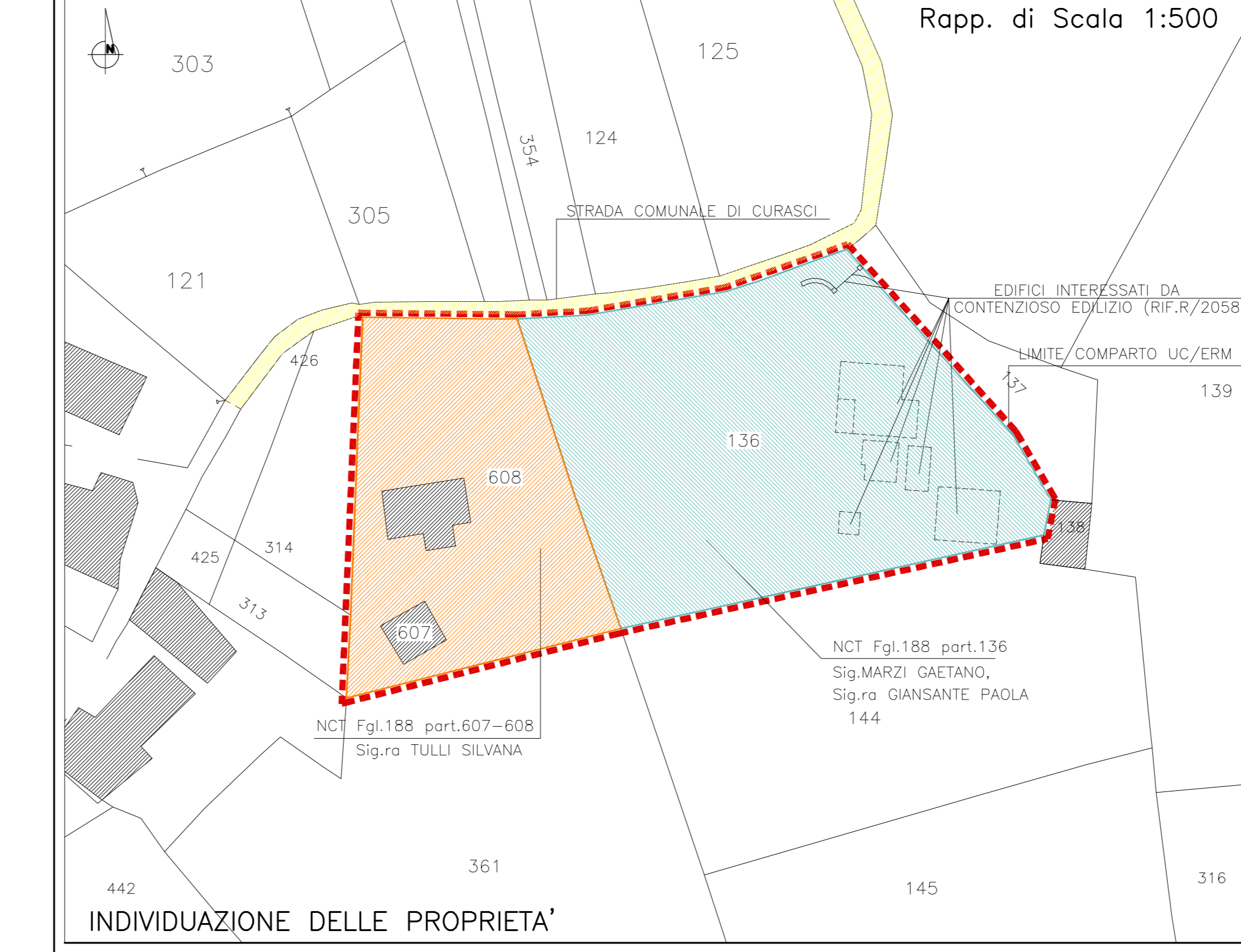
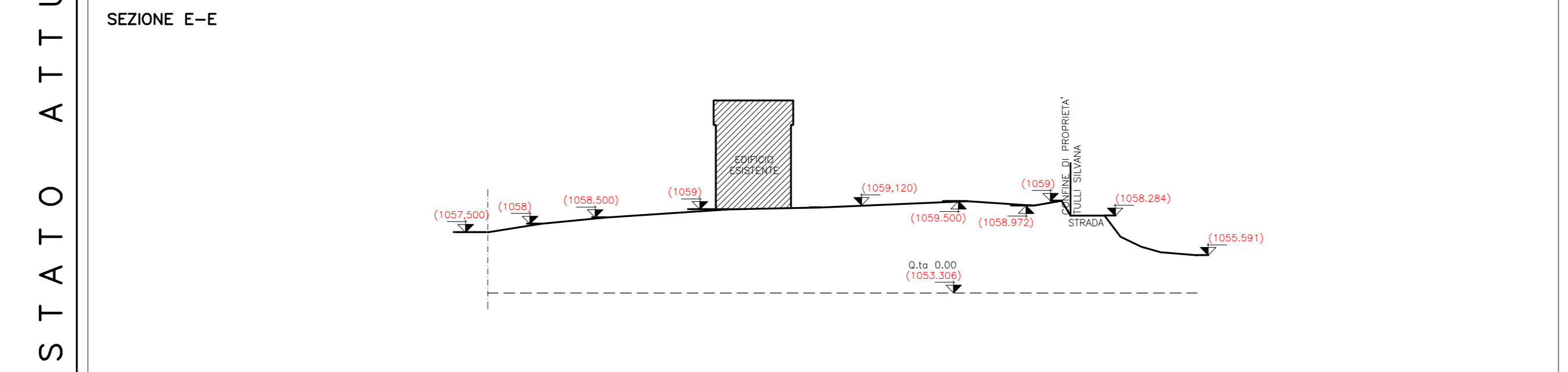
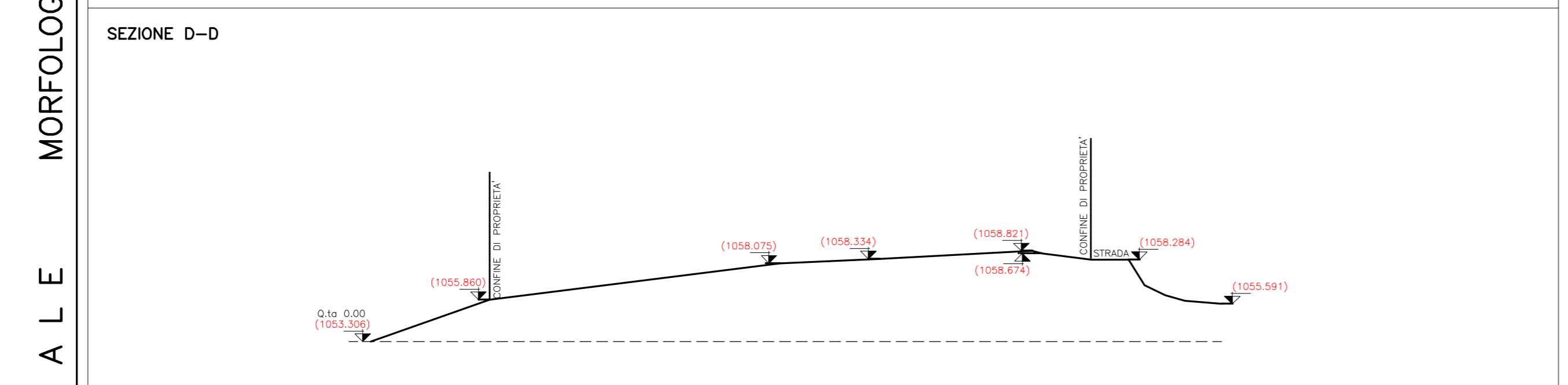
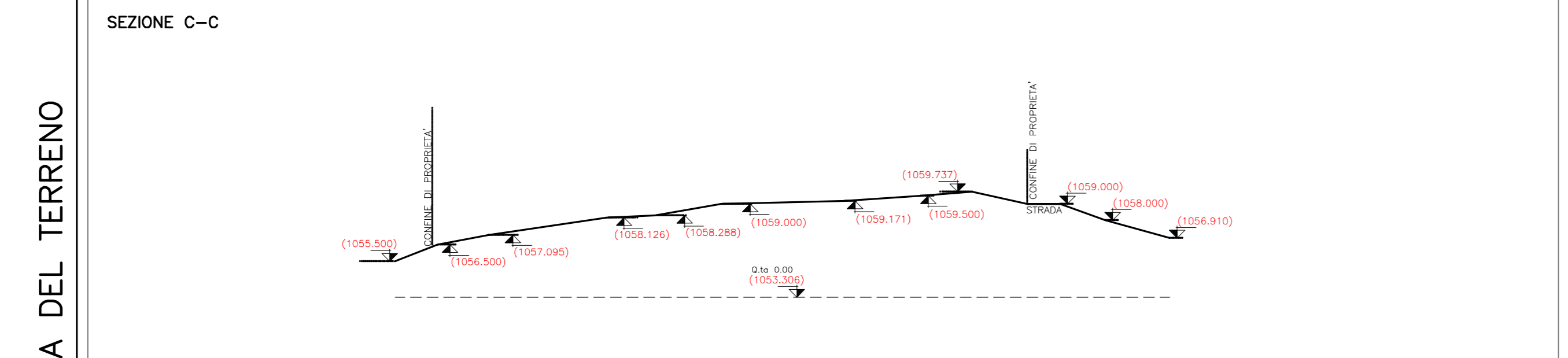
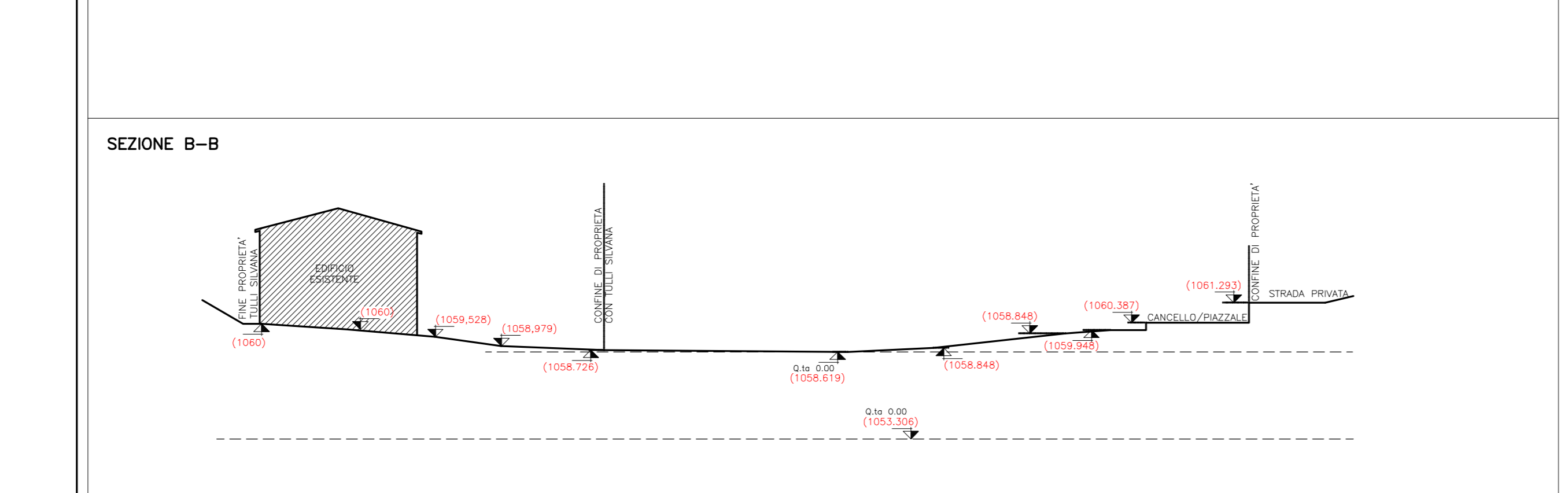
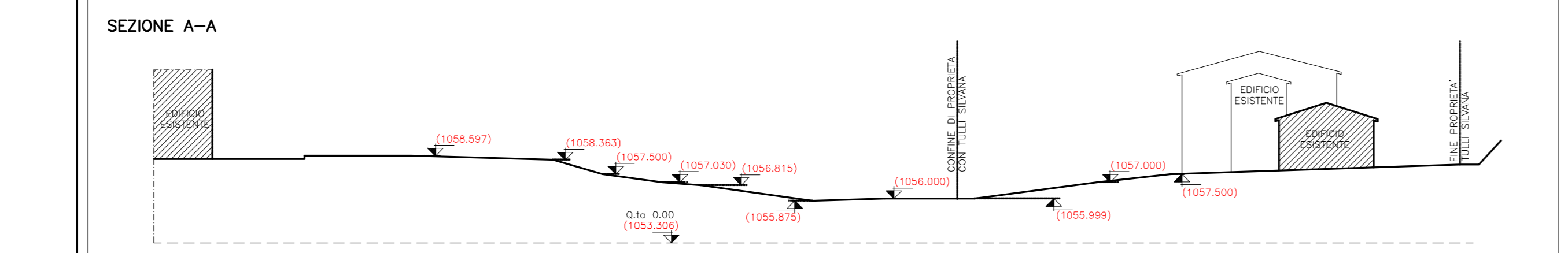
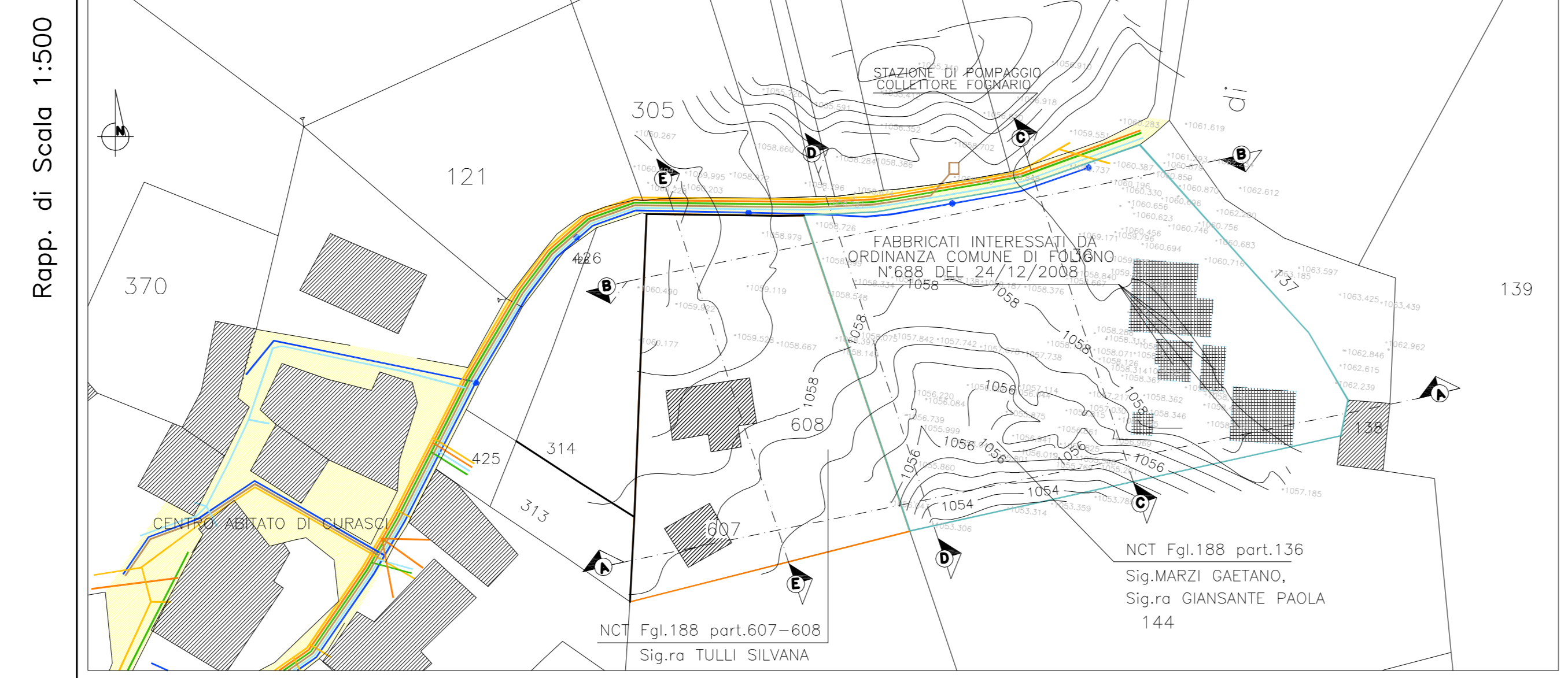
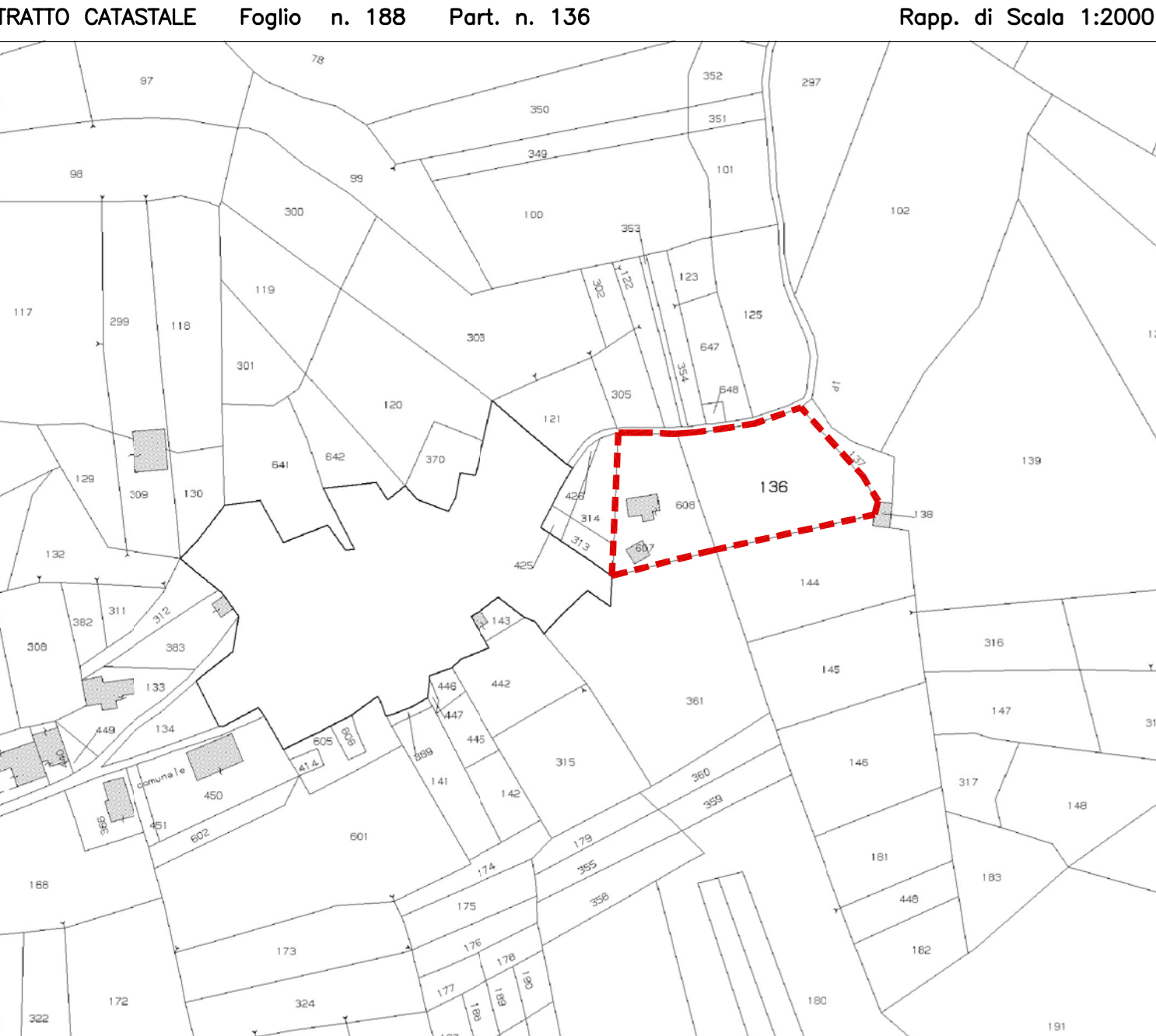
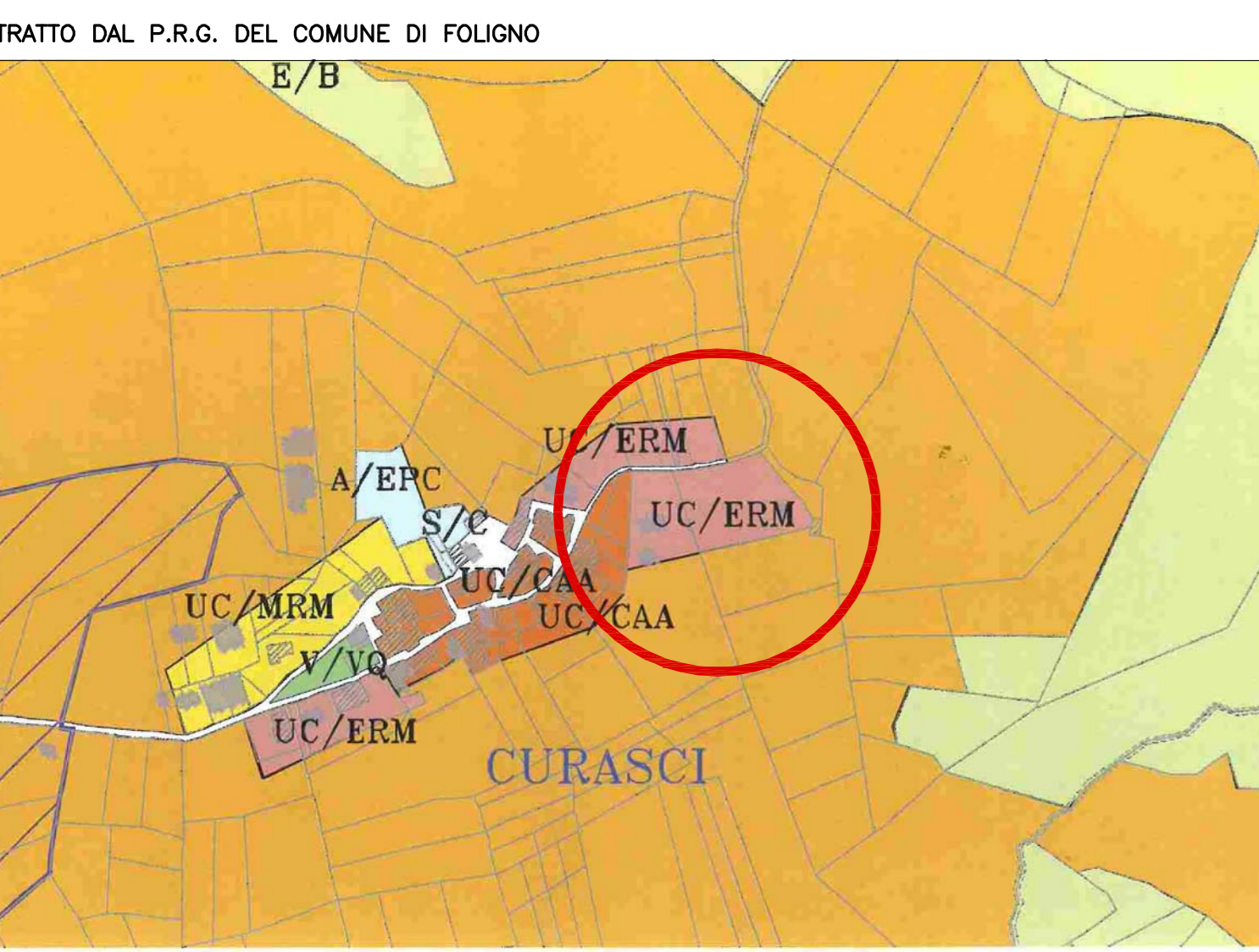
COD. COMMESSA: 050FOL056-11 SCALA: **VARIE**

Committente: **SIG. MARZI GAETANO SIG.RA GIANANTE PAOLA SIG.RA TULLI SILVANA**

FIRMA PER ACCETTAZIONE:
 Sig. MARZI GAETANO
 Sig.ra GIANANTE PAOLA
 Sig. TULLI SILVANA

PROGETTISTA
dott.ing. CAIROLI MARCO

DIREZIONE LAVORI:



LEGENDA

- LIMITE DEL PIANO ATTUATIVO
- SUPERFICIE U.M.I.1
- SUPERFICIE U.M.I.2
- VIABILITA' PUBBLICA
- ALBERATURA ESISTENTE

RETI TECNOLOGICHE:

- RETE PUBBLICA ILLUMINAZIONE
- PALI PUB. ILLUMINAZIONE ESISTENTI
- RETE ACQUE NERE
- RETE ACQUEDOTTO
- RETE ENEL
- RETE TELECOM
- RETE GPL
- ALLACCIO ALLA RETE PUBBLICA

