

VARIANTE n°1 AL PIANO INSEDIAMENTI PRODUTTIVI (P.I.P.)  
IN LOCALITA' COLFIORITO

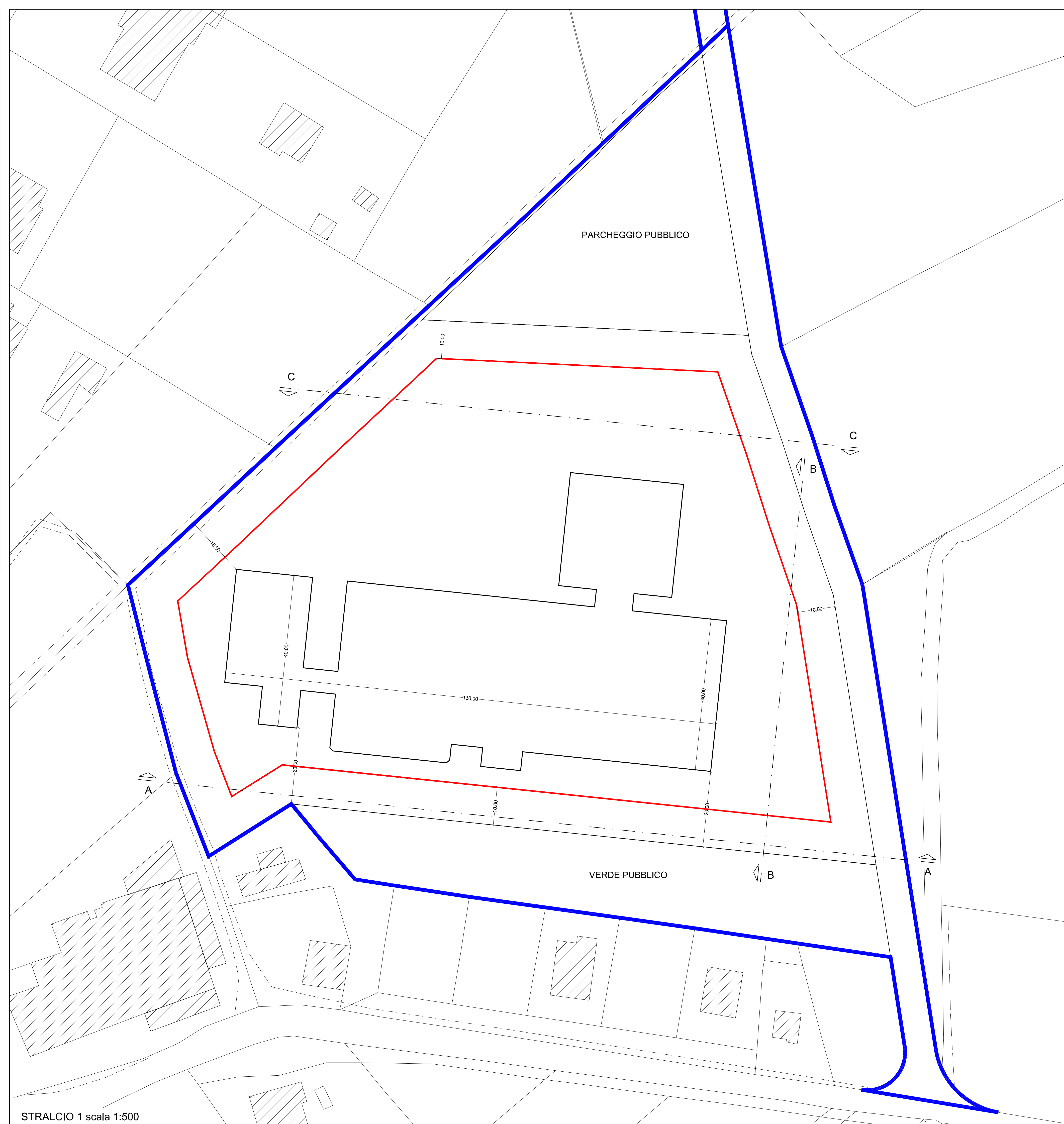
PLANIVOLUME  
- TAVOLA INTEGRATIVA -

COLLABORATORI: Arch. I. Canfarini, Geom. A. Conocchia, P.I. P. Giorgio Melelli, Geom. G. Medorini, Geom. A. Broccolo.

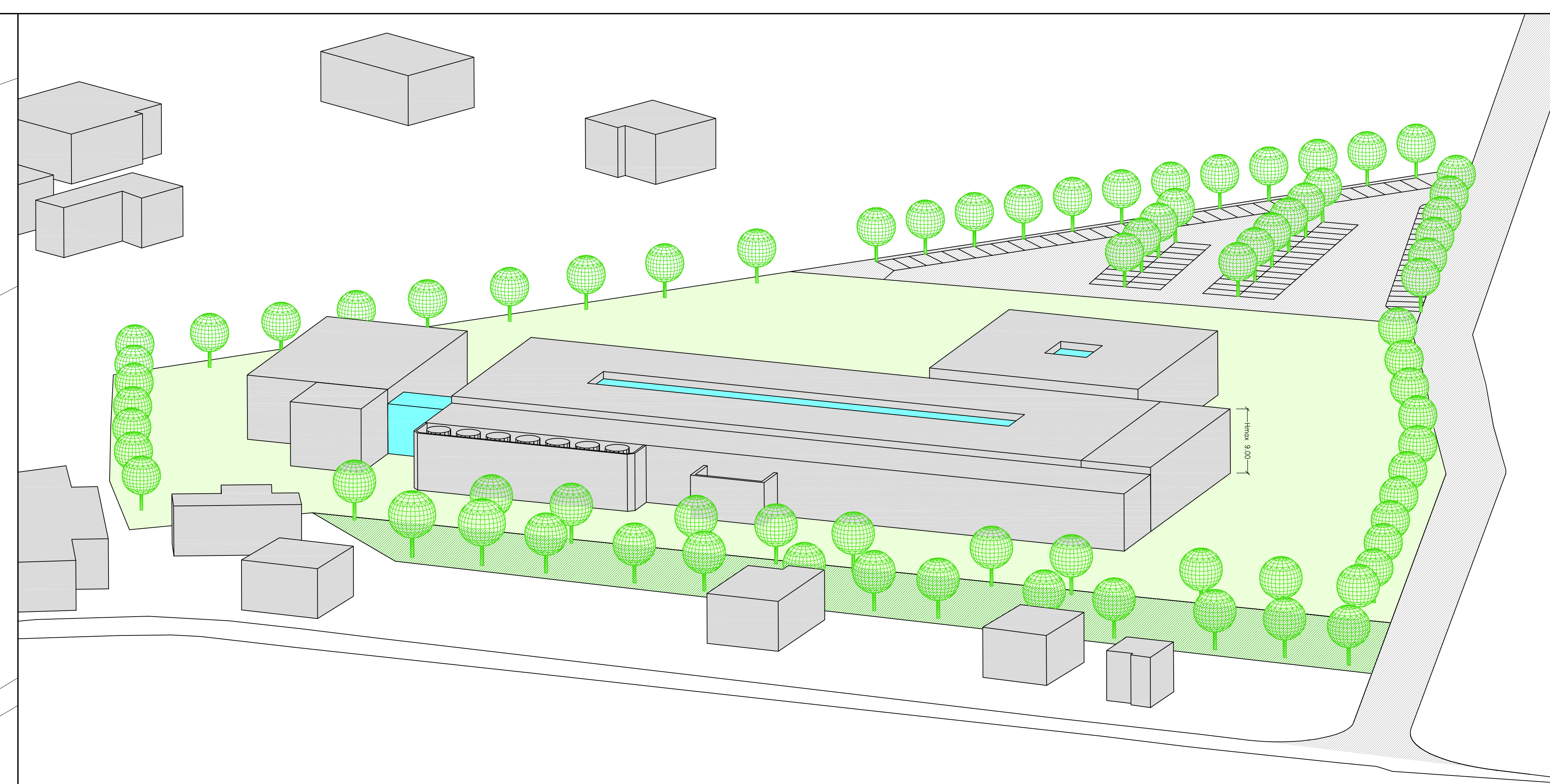
IL PROGETTISTA: Arch. Luciano Piermarini	RAPP: 1:500
IL DIRIGENTE: Arch. Luciano Piermarini	DATA: Novembre 2004

LEGENDA

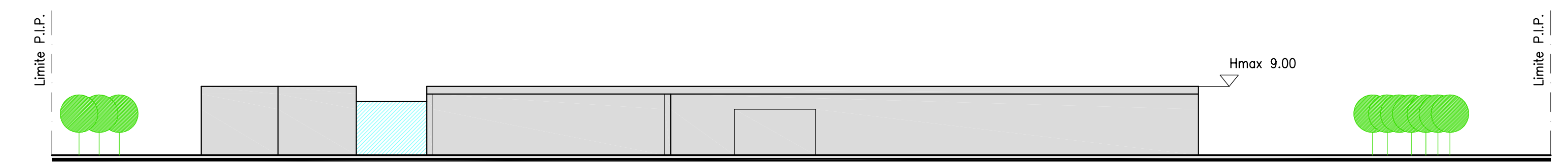
- Limite ambito
- Perimetro Massimo ingombro



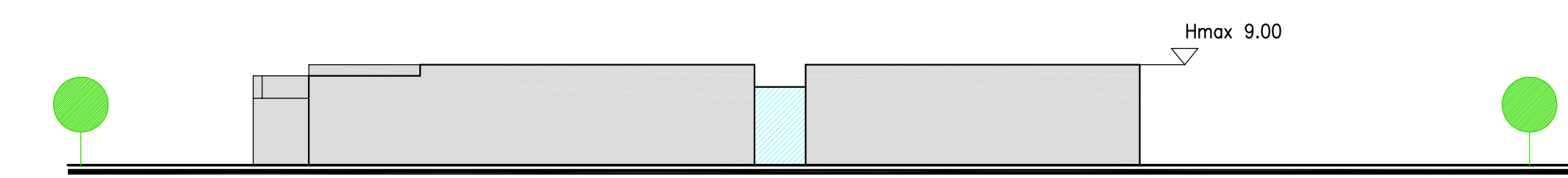
STRALCIO 1 scala 1:500



PLANIVOLUMETRICO



PROFILO A-A



PROFILO B-B



PROFILO C-C