



COMUNE DI FOLIGNO  
 AREA URBANISTICA ED EDILIZIA  
 SERVIZIO URBANISTICA  
 Via XX Settembre n° 54/C

ALLEGATO ALLA DELIBERA  
 DEL CONSIGLIO COMUNALE  
 N° 2 MAR. 2006

PIANO ATTUATIVO DI INIZIATIVA PUBBLICA  
 CON PREVISIONI PLANIVOLUMETRICHE  
 ZONA C7 MADONNA DELLA FIAMENGA

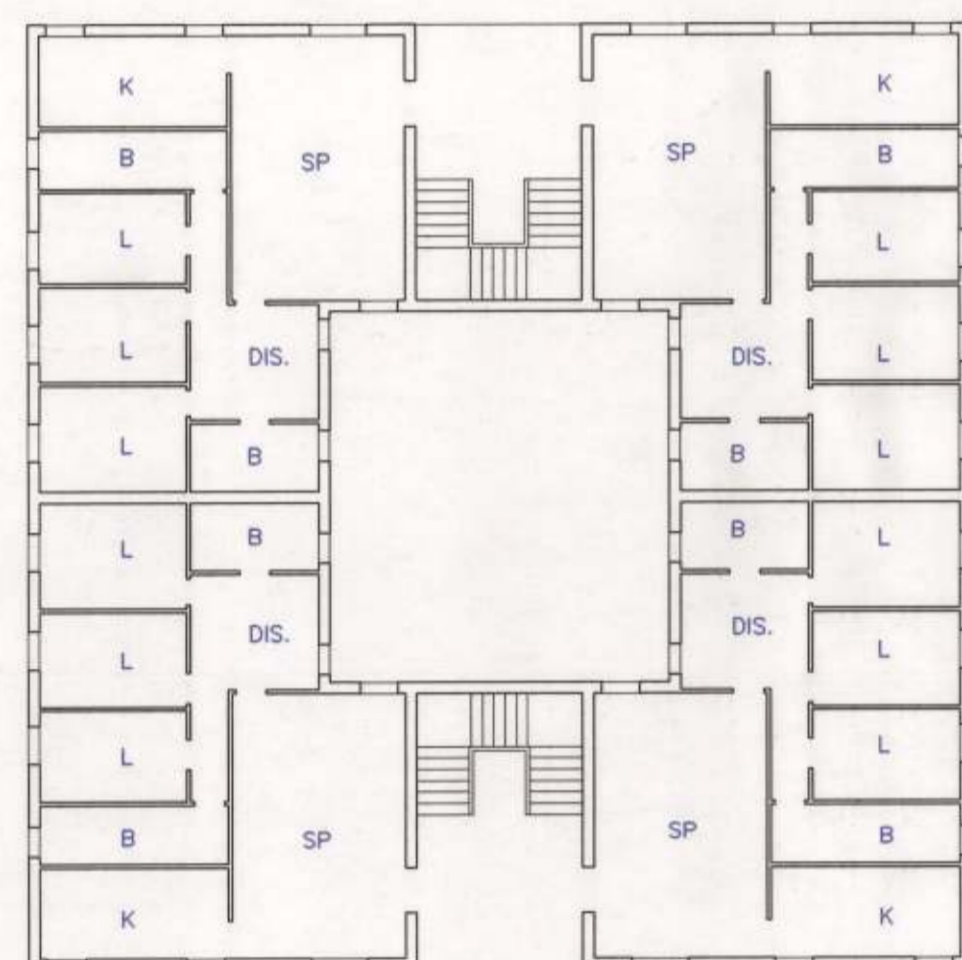


VARIANTE n° 3

TAVOLA  
 4/5  
 SCHEMI TIPOLOGICI  
 (aggiornata con controdeduzioni alle osservazioni)

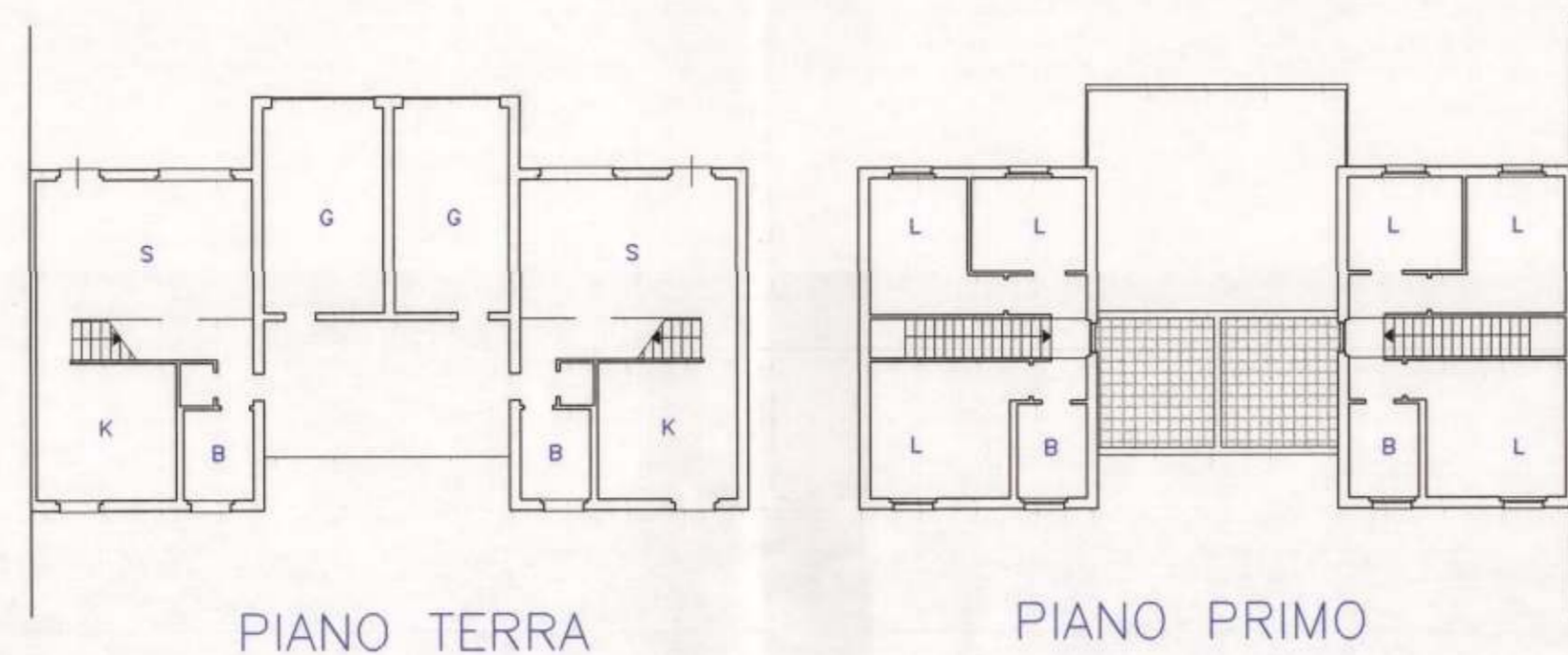
GRUPPO DI LAVORO: Geom. Giuseppe LORENZETTI - Geom. Angelo CONOCCHIA - Geom. Gaetano MEDORINI  
 Geom. Andrea BROCCOLO - P.L. Pier Giorgio METELLI

DETERMINANTE DI AREA: Arch. Luciano PIERMARINI DATA: Dicembre 2004  
 Scale: 1:1500  
 agg.: Febbraio 2006



PIANO TIPO

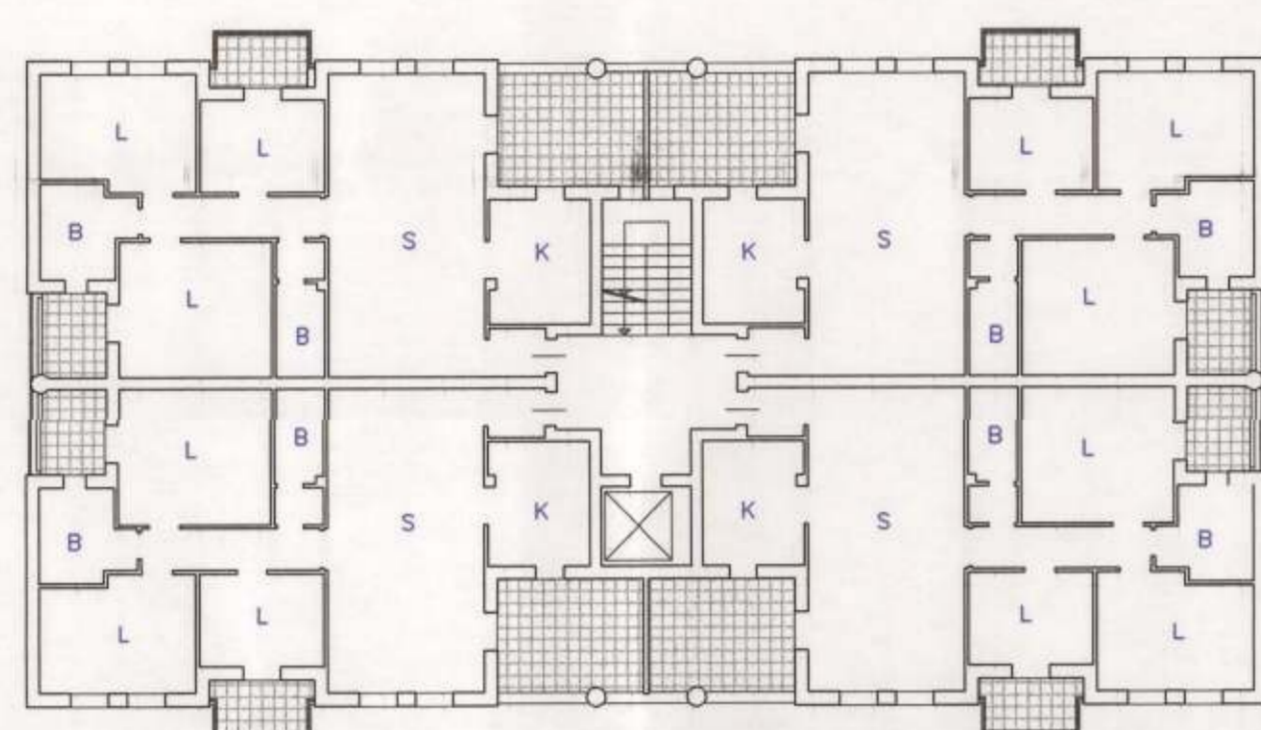
TIPOLOGIA A (BLOCCO PLURIFAMILIARE-UFFICI-COMMERCIO)



PIANO TERRA

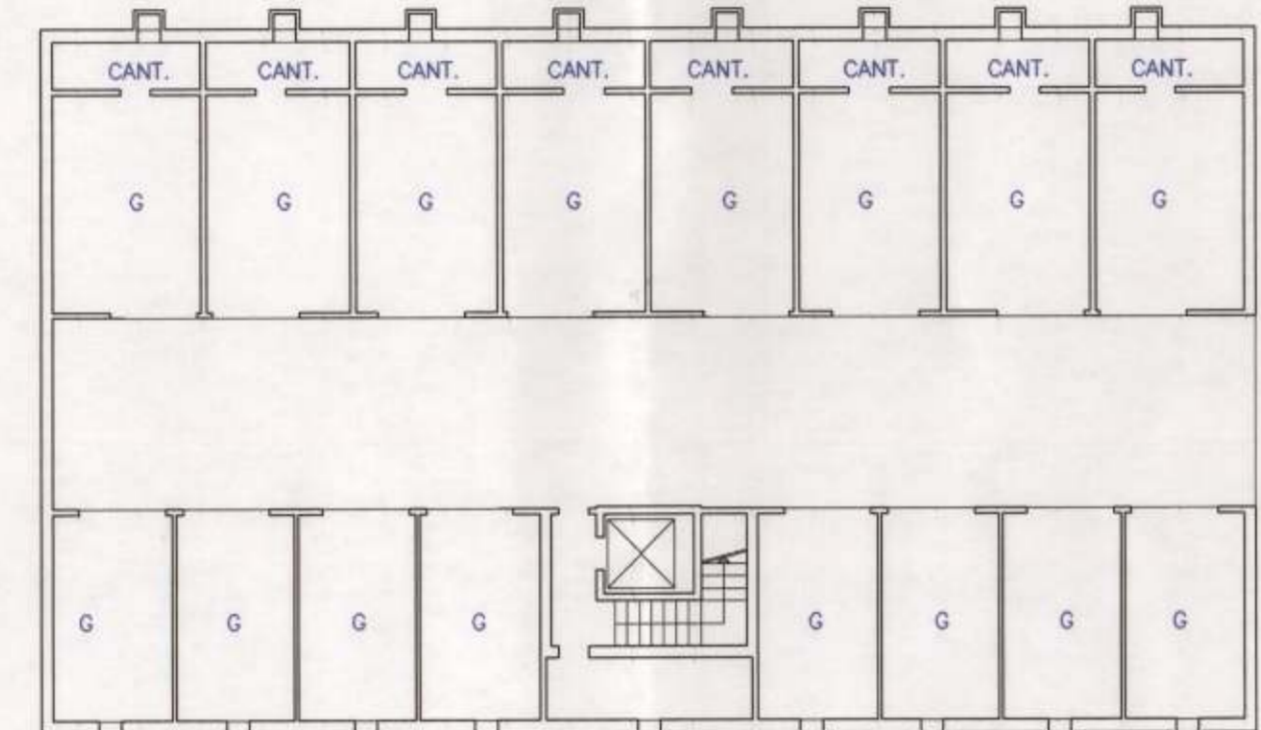
PIANO PRIMO

TIPOLOGIA F (SCHIERA)

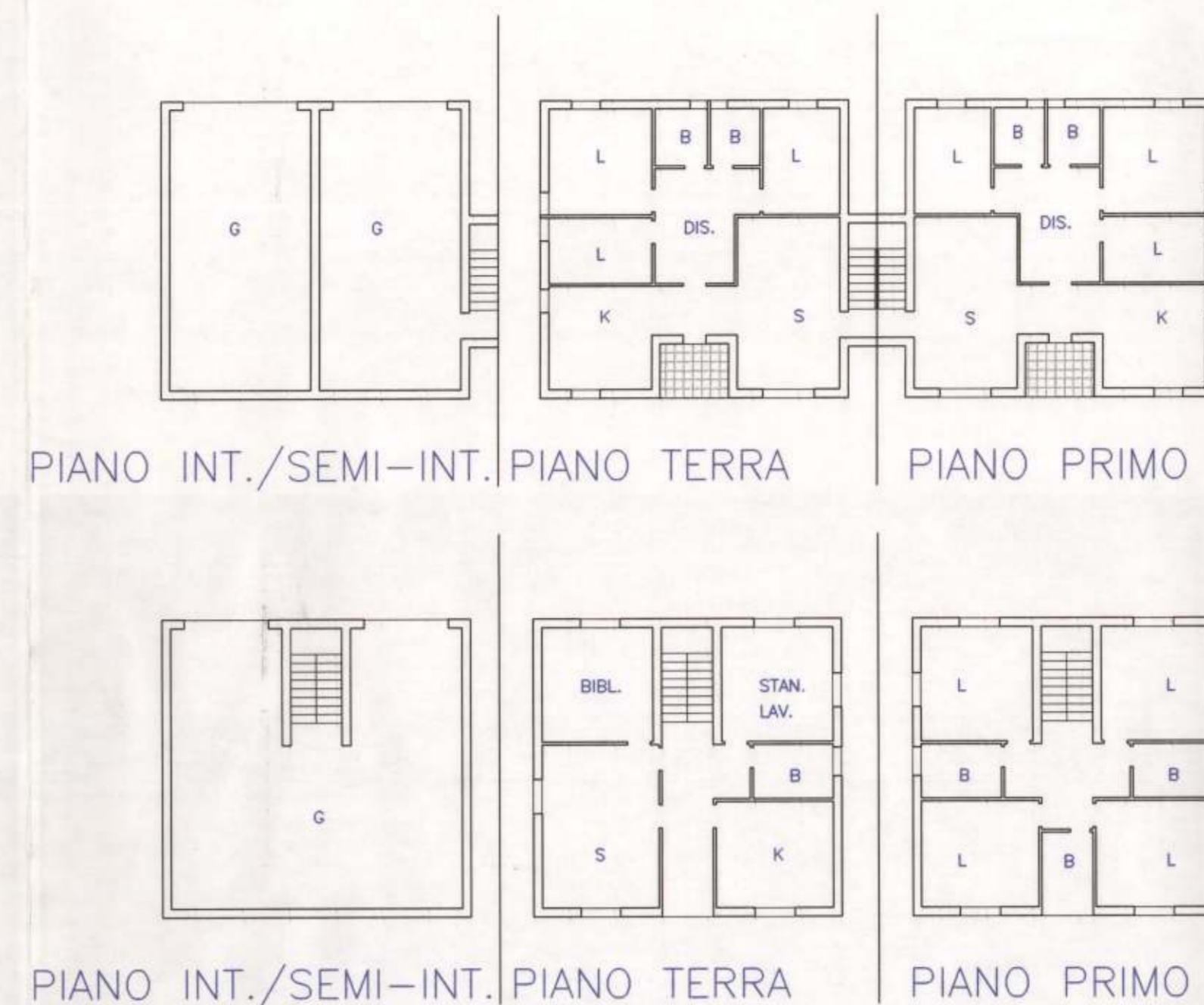


PIANO TIPO

TIPOLOGIA C (LINEA-PLURIFAMILIARE)



PIANO INT.



PIANO INT./SEMI-INT. PIANO TERRA

PIANO PRIMO

PIANO INT./SEMI-INT. PIANO TERRA

PIANO PRIMO

TIPOLOGIA G (BI-PLURIFAMILIARI)

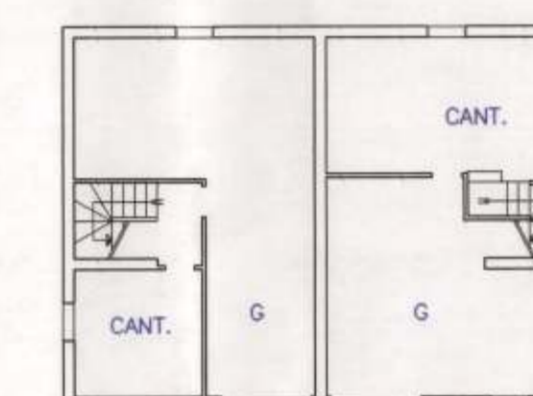


PIANO TIPO

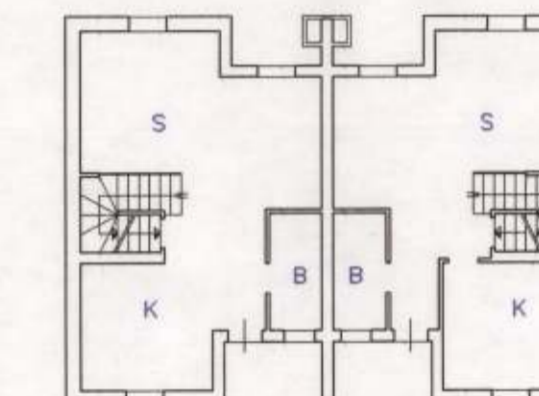
TIPOLOGIA D (BLOCCO-PLURIFAMILIARE)



PIANO TERRA



PIANO INT./SEMI-INT.

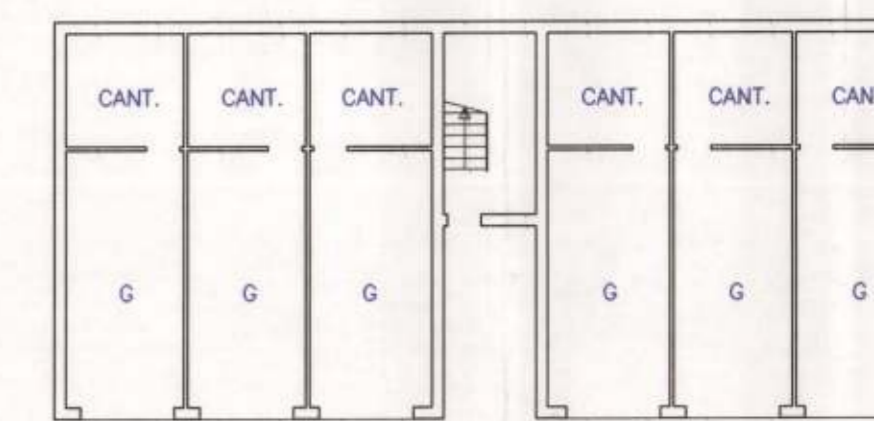


PIANO TERRA



PIANO PRIMO

TIPOLOGIA E (UNI-BIFAMILIARE)  
 Si veda anche il disposto dell'articolo 8, comma 9, delle NTA del PPE

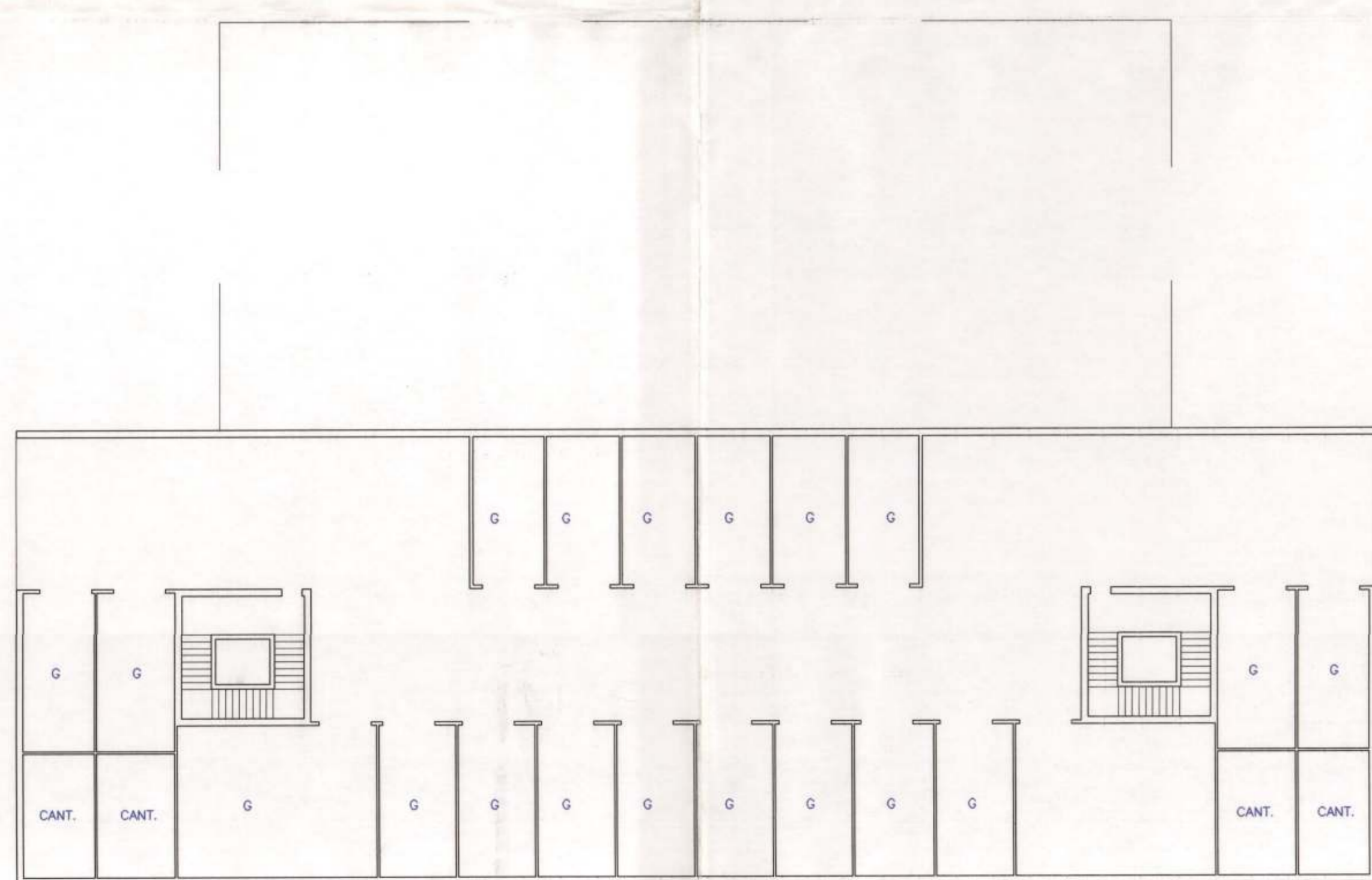


PIANO INT./SEMI-INT.

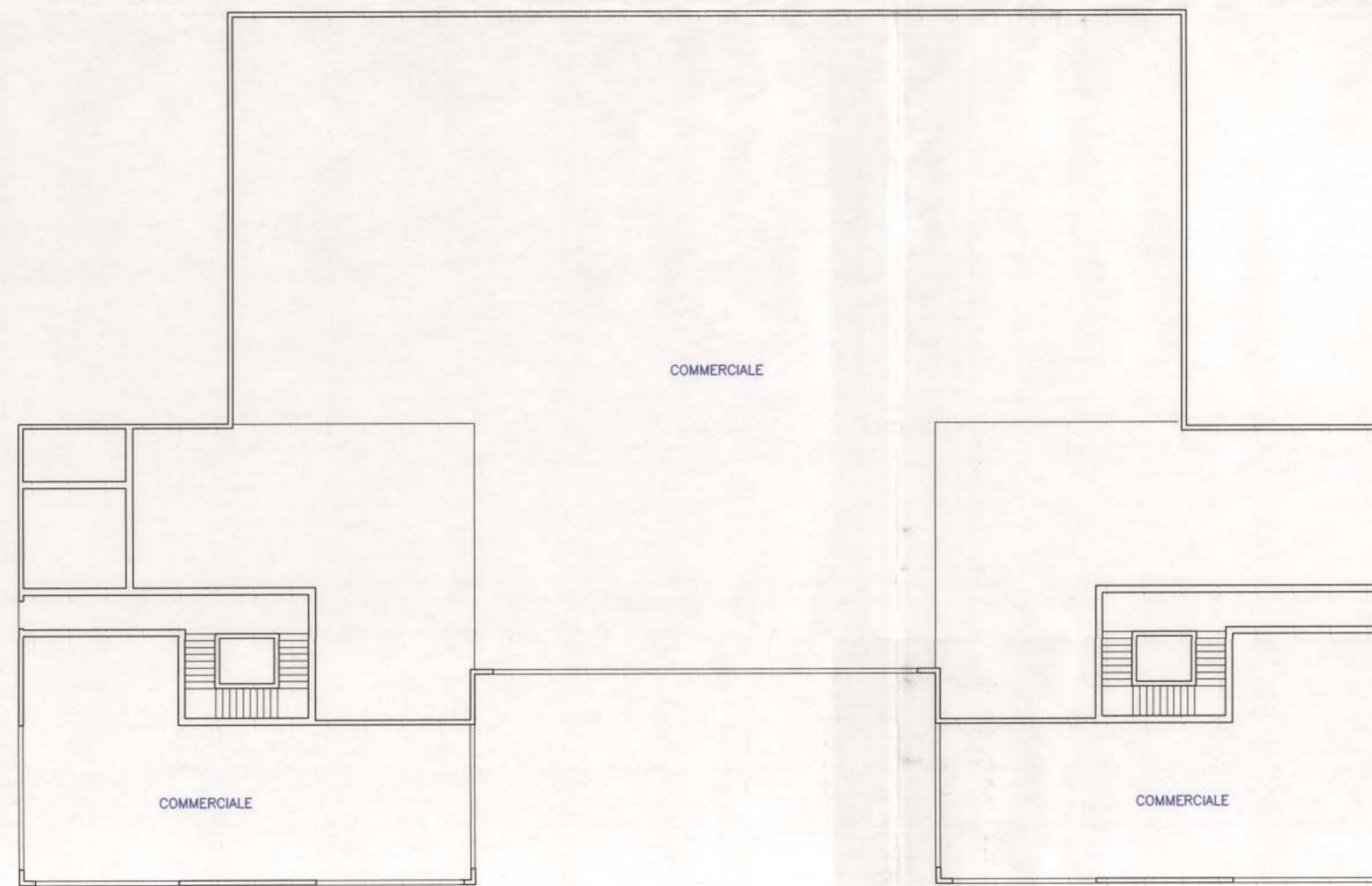


PIANO TIPO

TIPOLOGIA H (PLURIFAMILIARI)

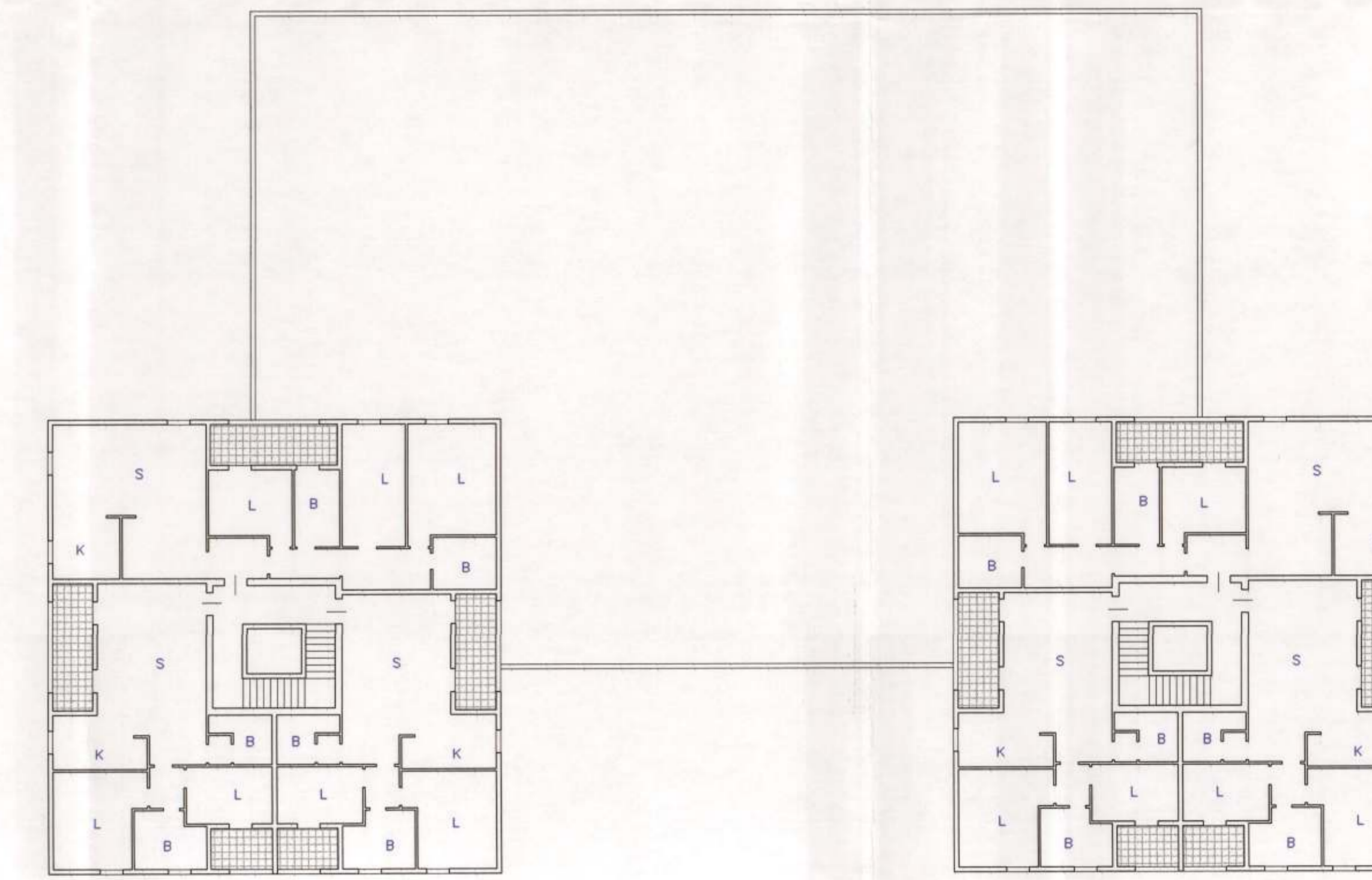


PIANO INT



PIANO TERRA

TIPOLOGIA B (BLOCCO PLURIFAMILIARE-UFFICI-COMMERCIO)



PIANO TIPO