

**COMUNE DI FOLIGNO**  
**AMBITO 1 "IL CAMPUS"**  
**AREA DISMESSA EX ZUCCHERIFICIO ED AREE ATTIGUE**  
**PIANO ATTUATIVO**

COMMITTENTE  
**COOP CENTRO ITALIA**  
 Società Cooperativa di Consumo s.r.l.  
 Loc. Pucciaralli - Castiglione del Lago (PG)

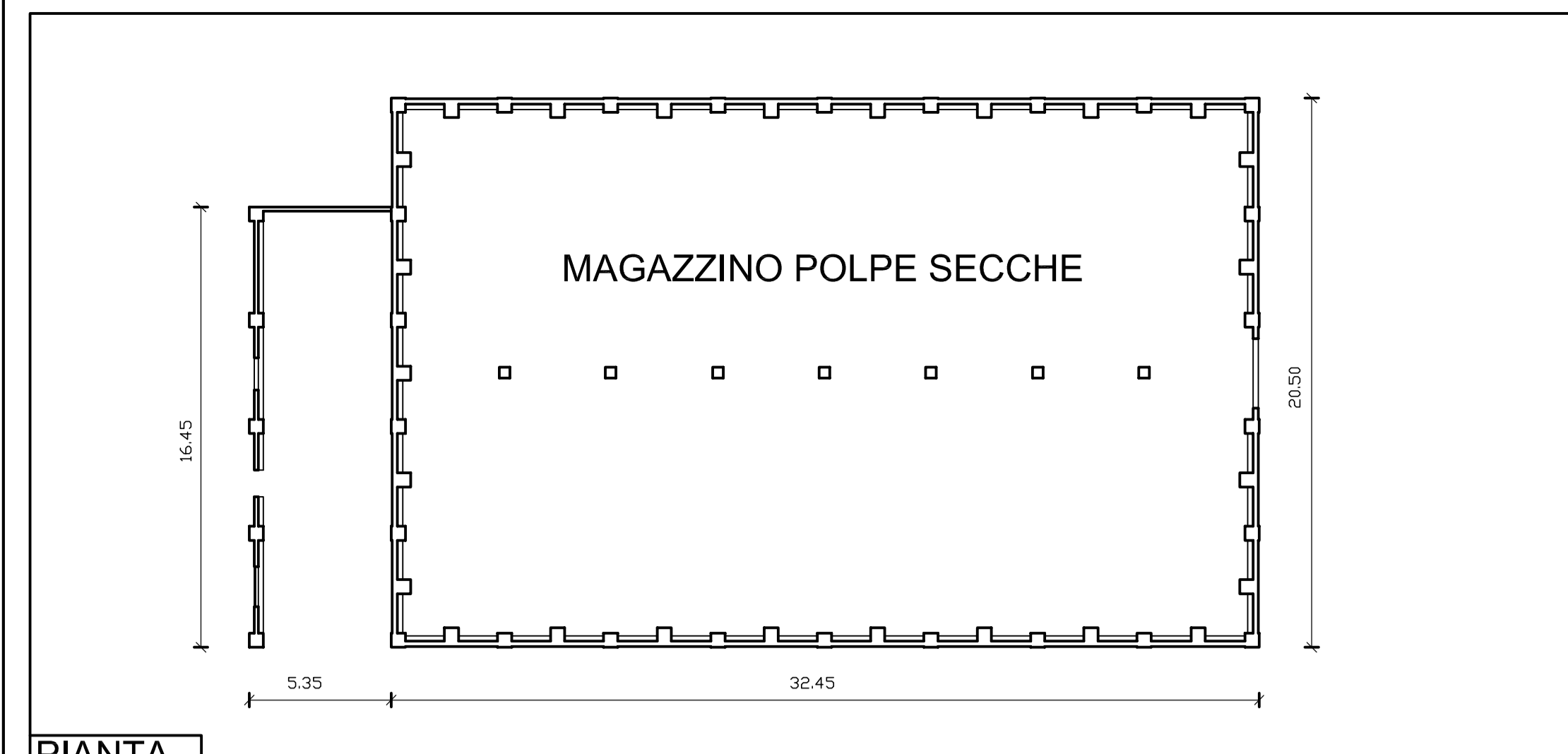
Progettazione  
 Arch. A. Cleri - Arch. L. Beddini - Arch. C. Ricottini  
 Collaborazione  
 Geom. G. Vitali - Geom. P. Saracchini

Titolo: **RILIEVO DELLO STATO ATTUALE**

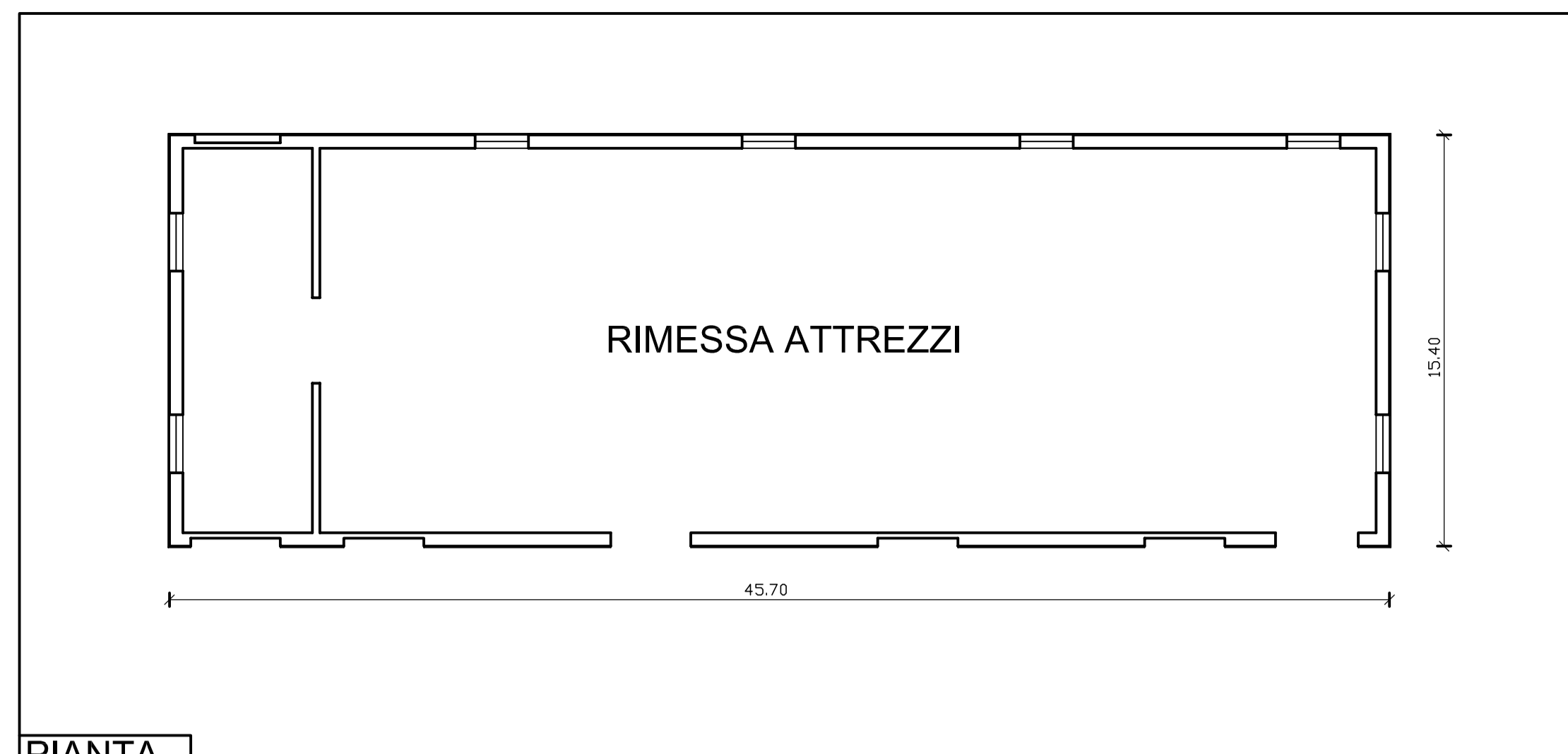
Scale: **1:200** (Pianta), **1:100** (Sezioni)  
 Foglio: **3.3**

Data: **FEB. 2004**  
 Aggiornamenti: **01) APR. 2004**

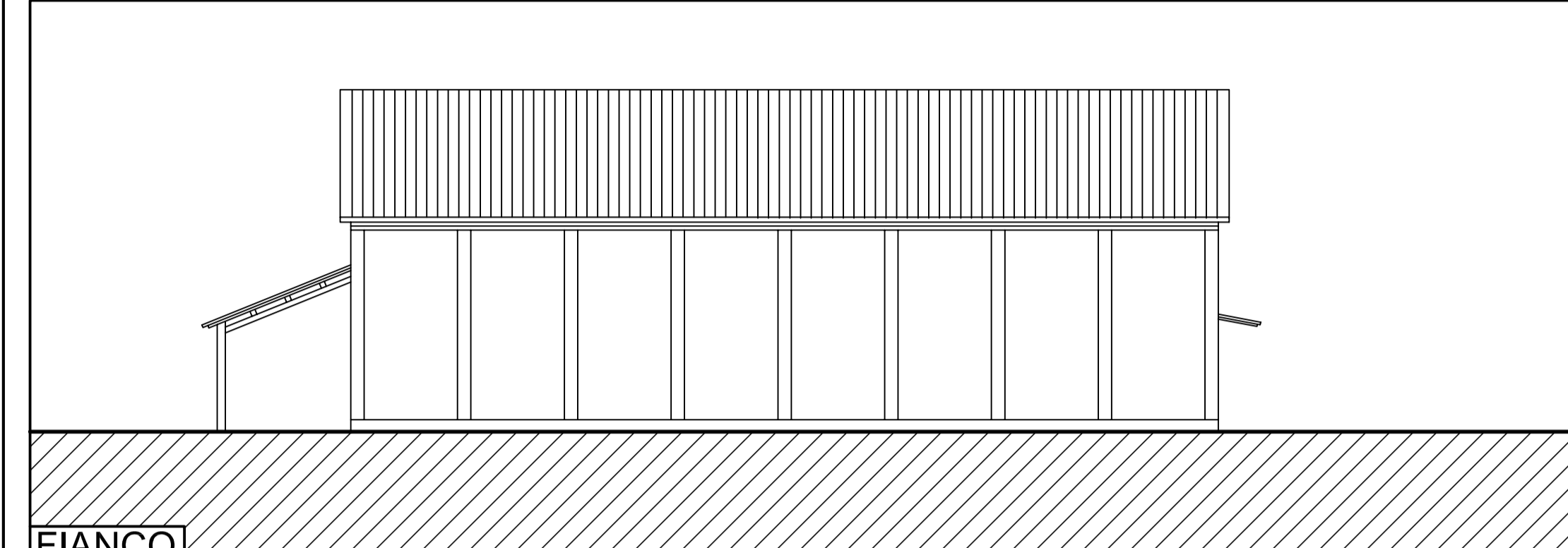
**ARAUT**  
Ricerca e Progettazione in Architettura, Ingegneria, Urbanistica  
06034 Foligno, Largo Marcheselli, n.3/9 Tel.0742-359289 Fax.0742-359299 e-mail:post@araut.it  
LA RIPRODUZIONE E' IRROZOLUZIONE, ANCHE PARZIALE O IN FORMA DI QUOTA, E' VIETA A TERMINI DI LEGGE.



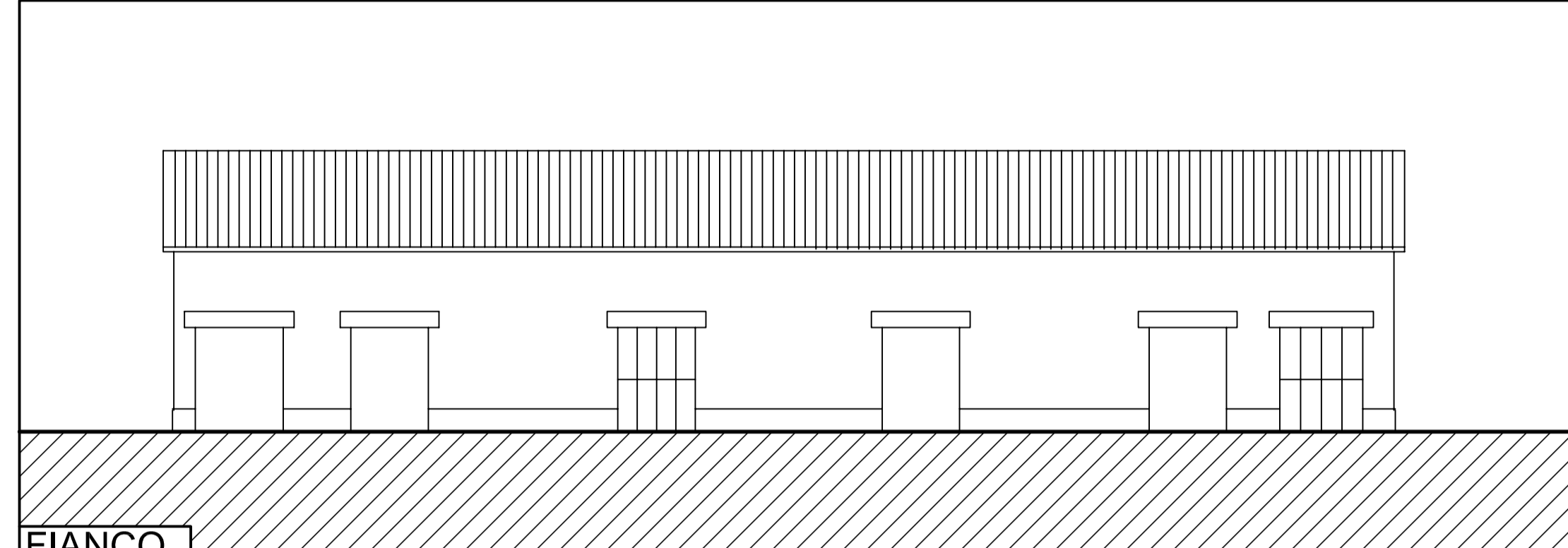
PIANTA



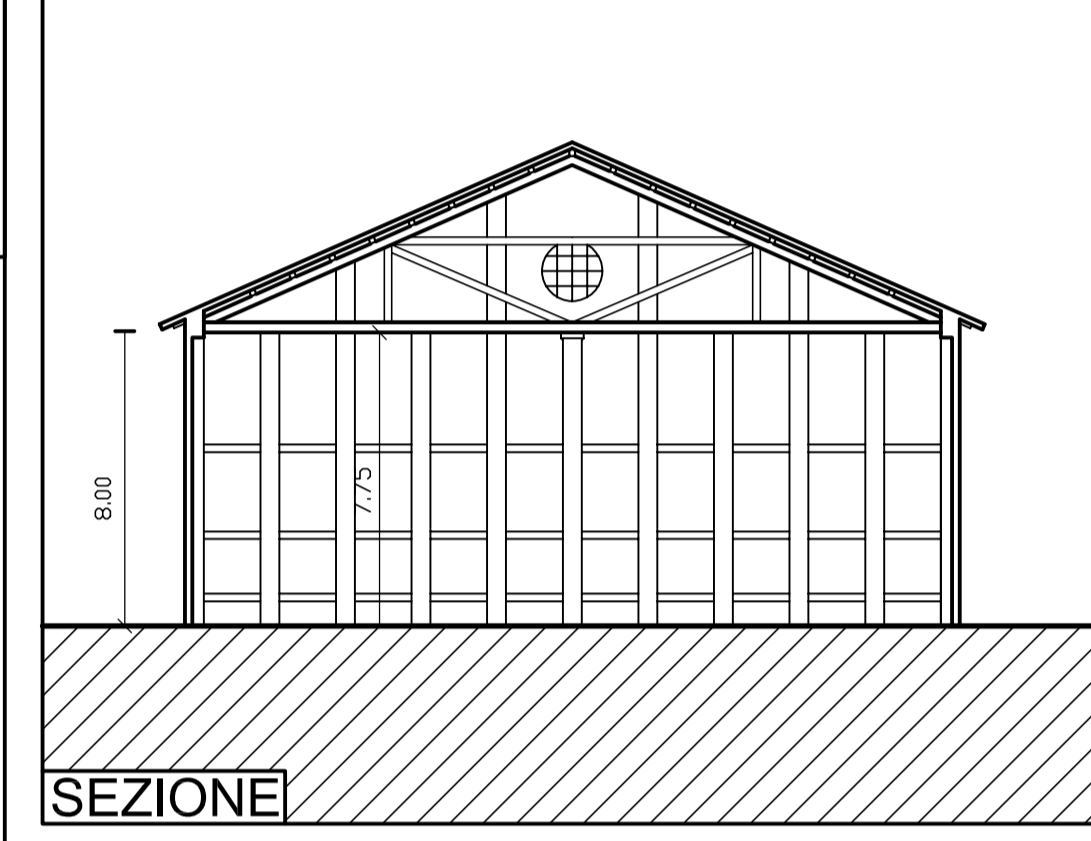
PIANTA



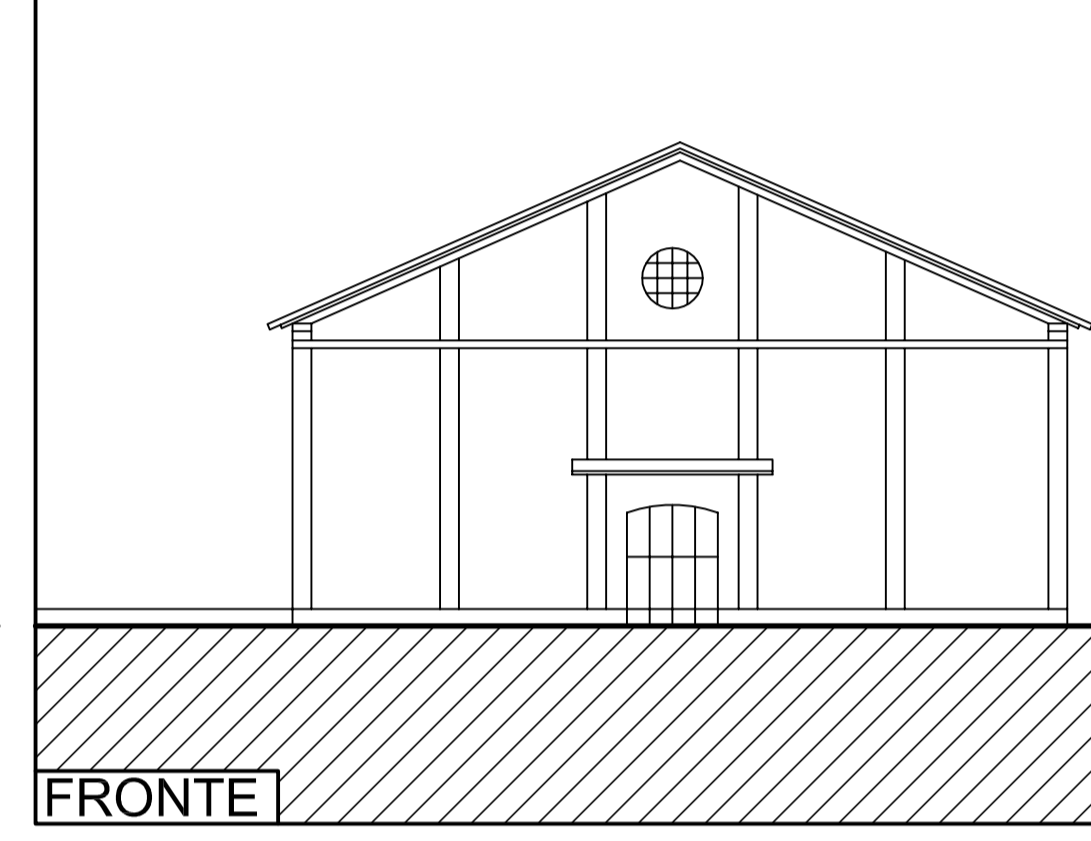
FIANCO



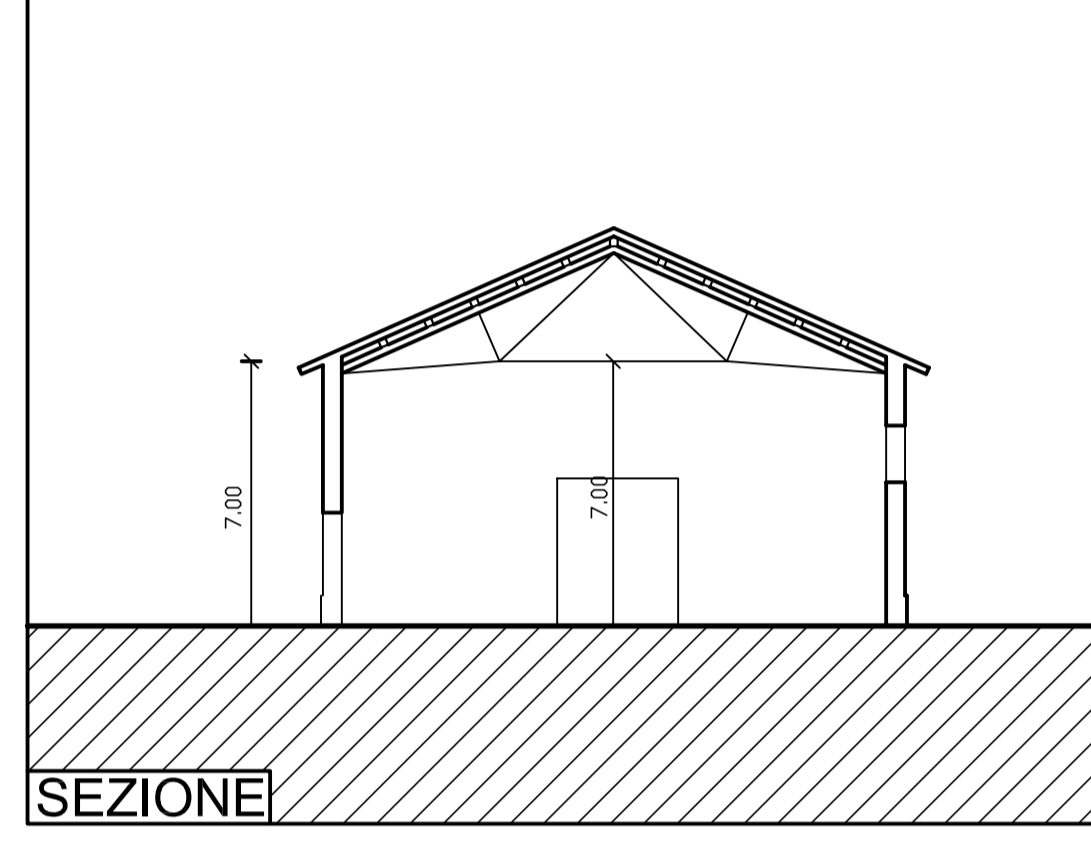
FIANCO



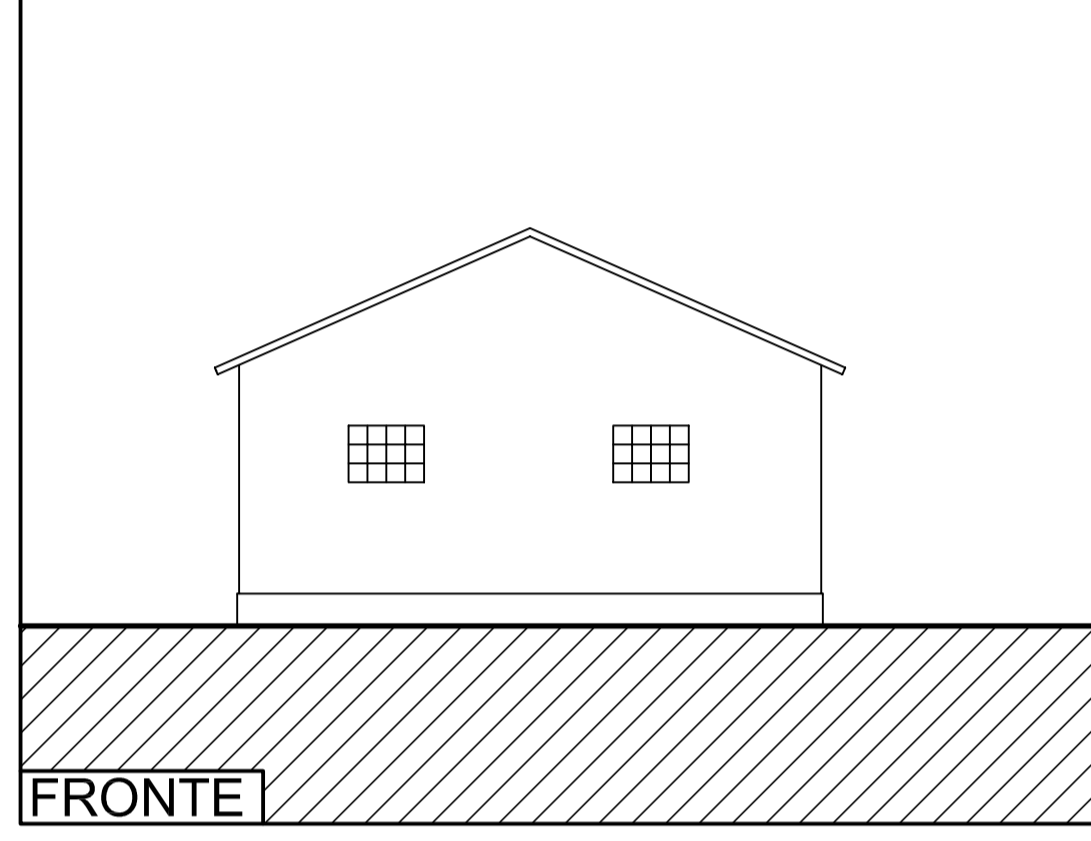
SEZIONE



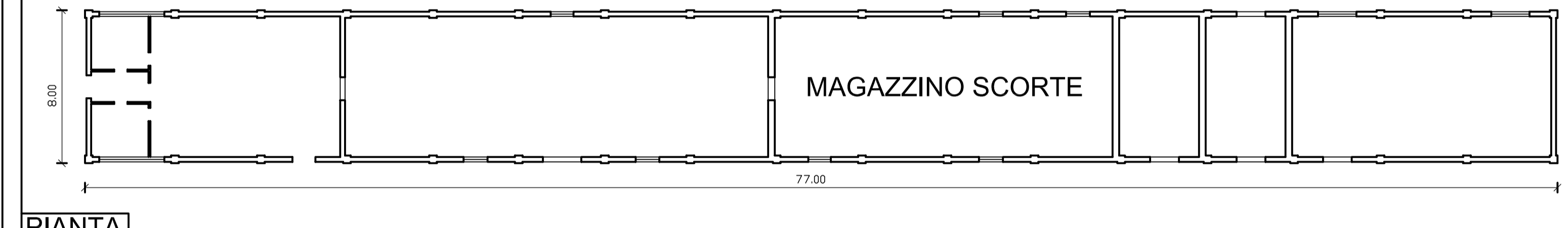
FRONTE



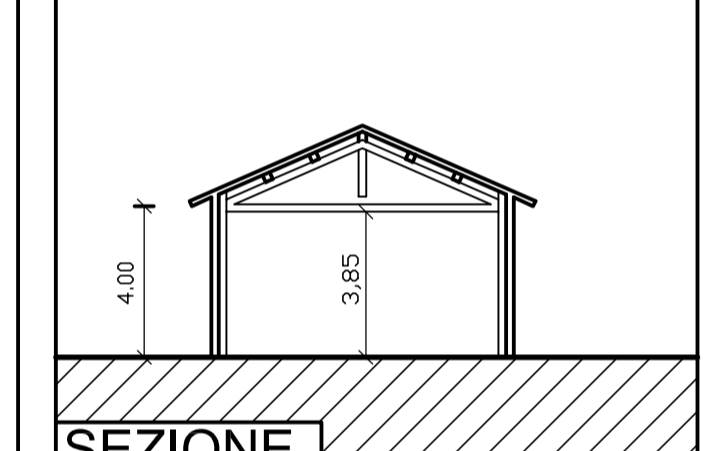
SEZIONE



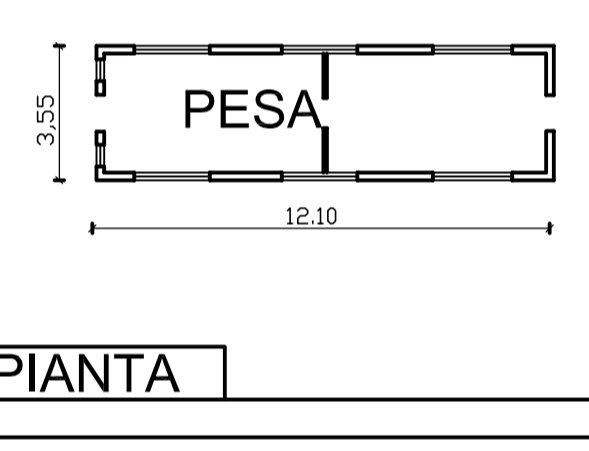
FRONTE



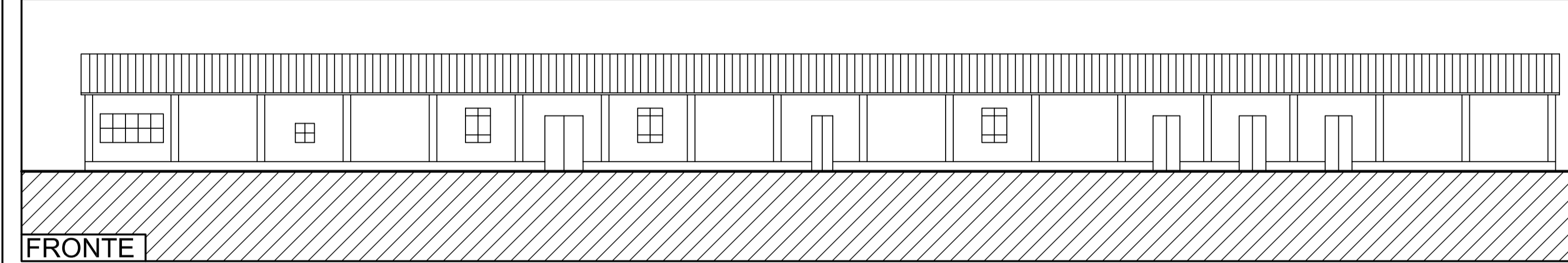
PIANTA



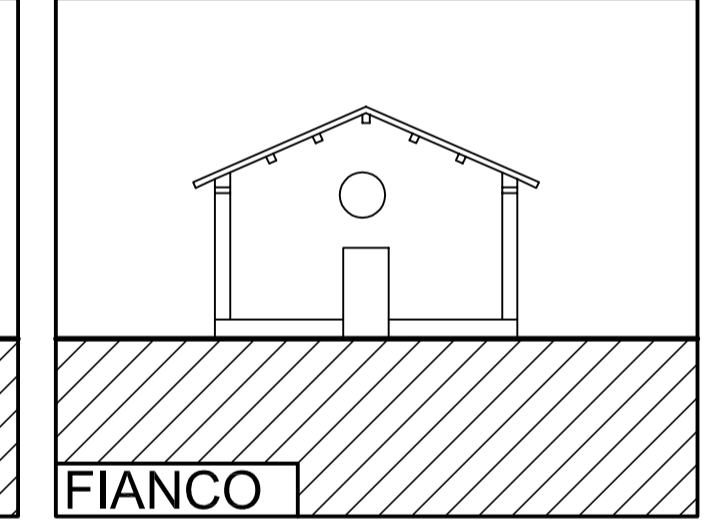
SEZIONE



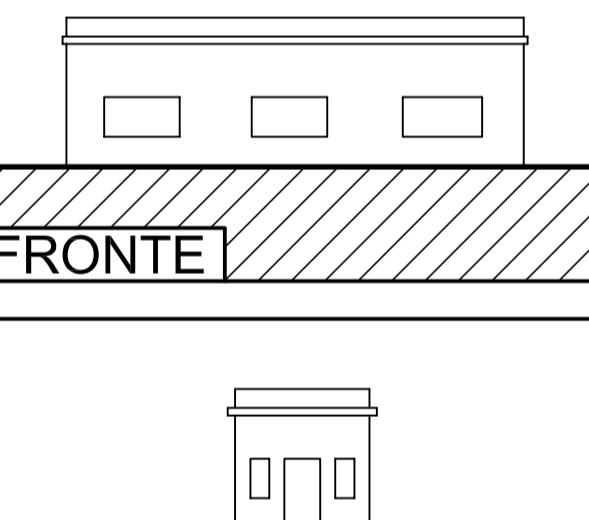
PIANTA



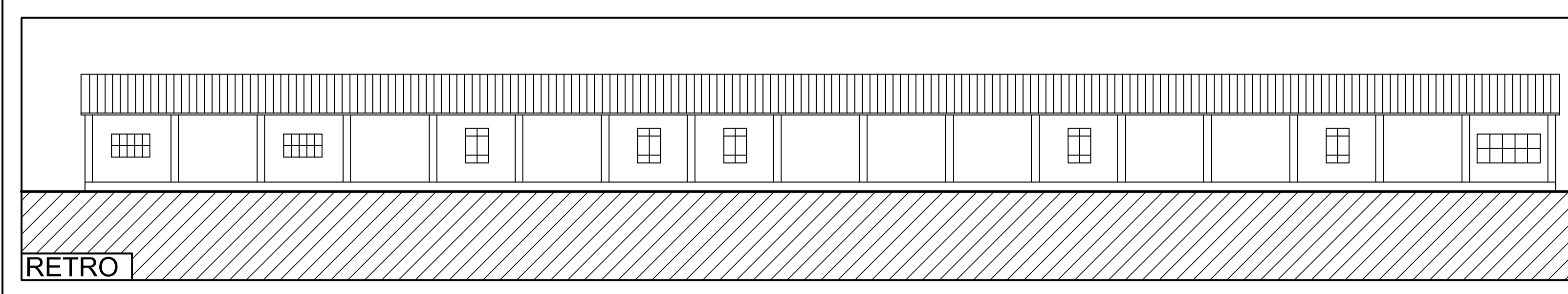
FRONTE



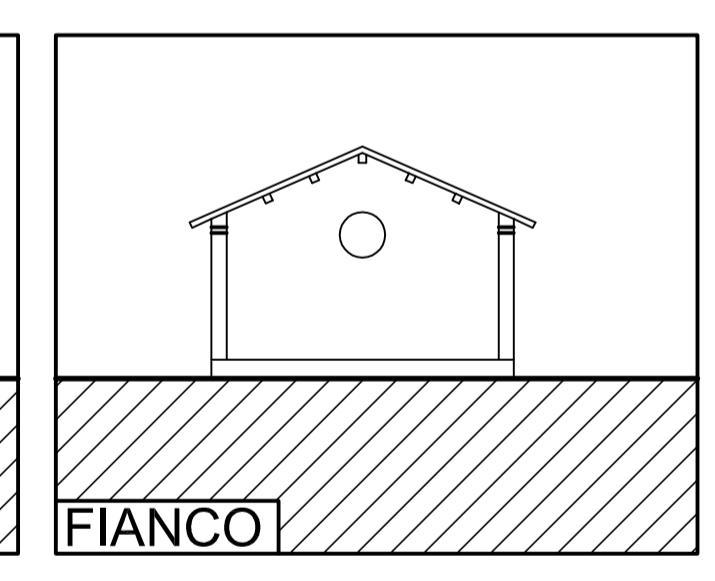
FIANCO



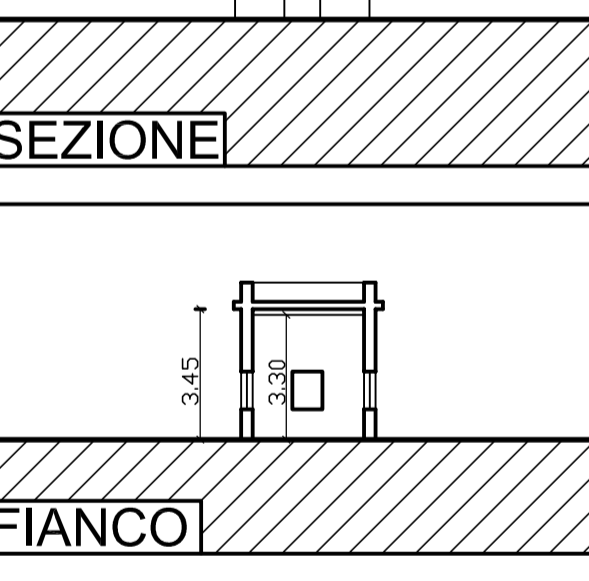
FRONTE



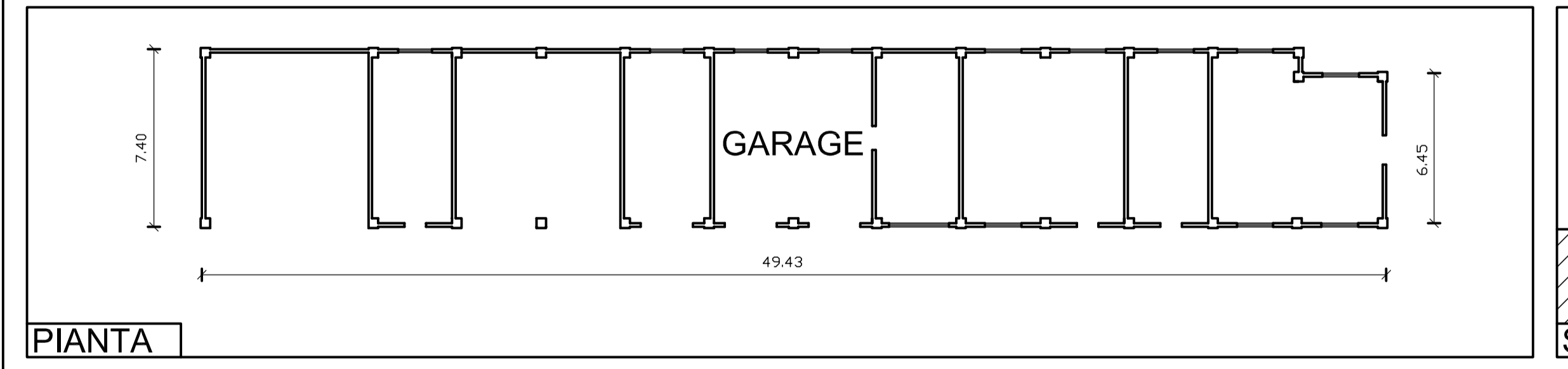
RETRO



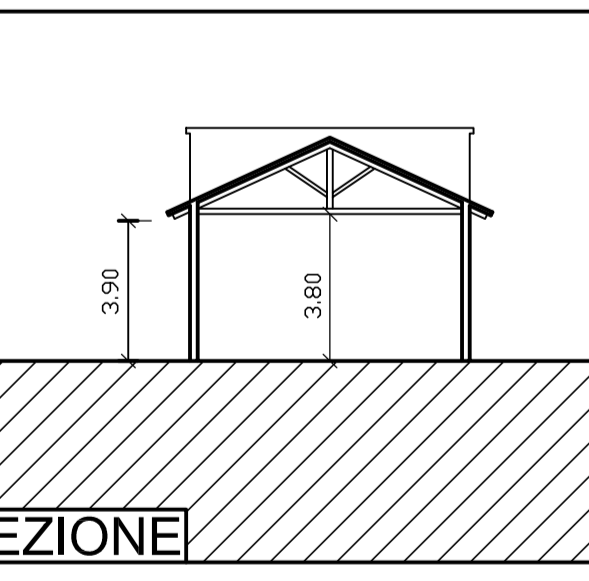
FIANCO



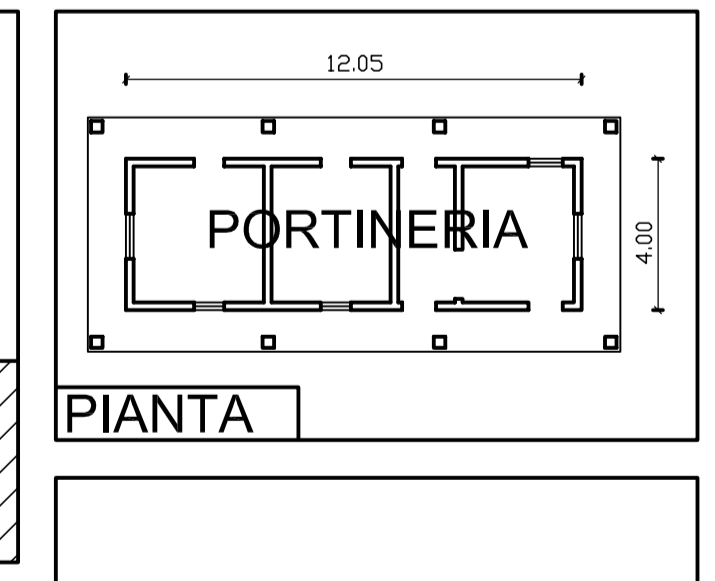
SEZIONE



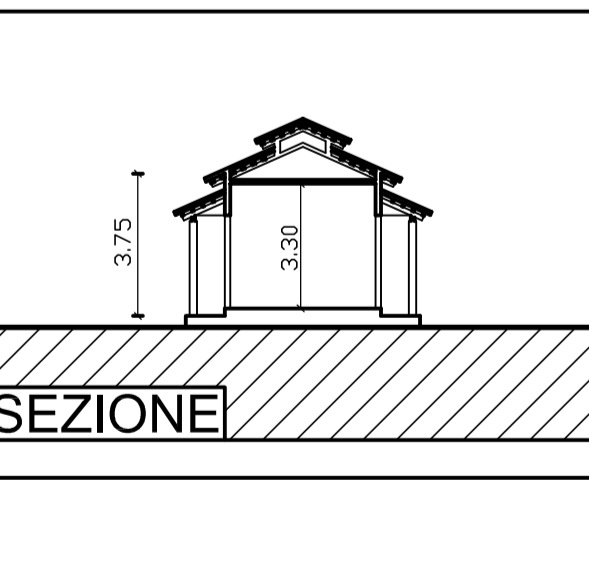
PIANTA



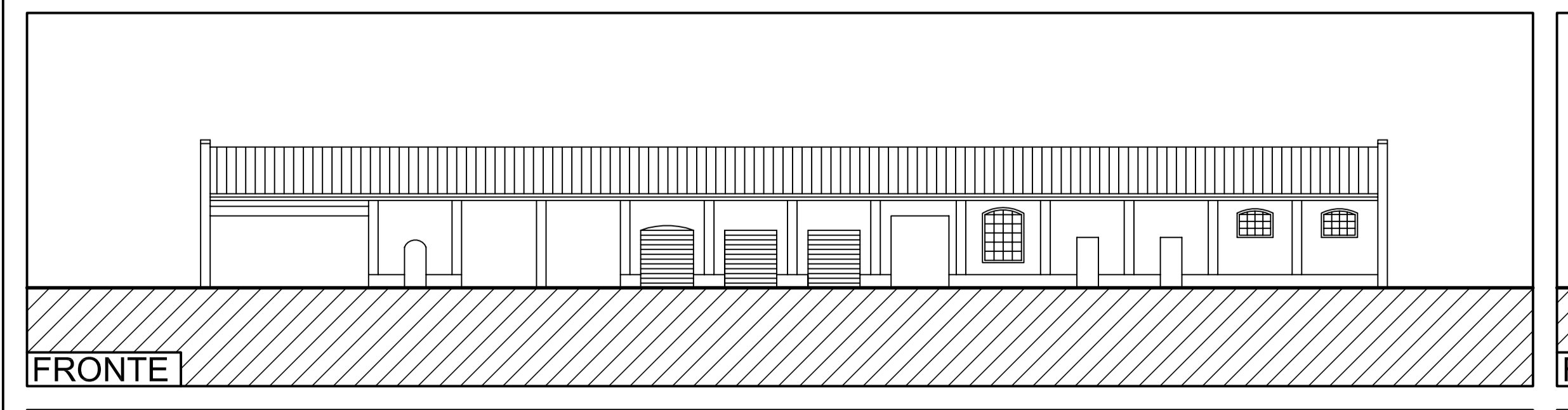
SEZIONE



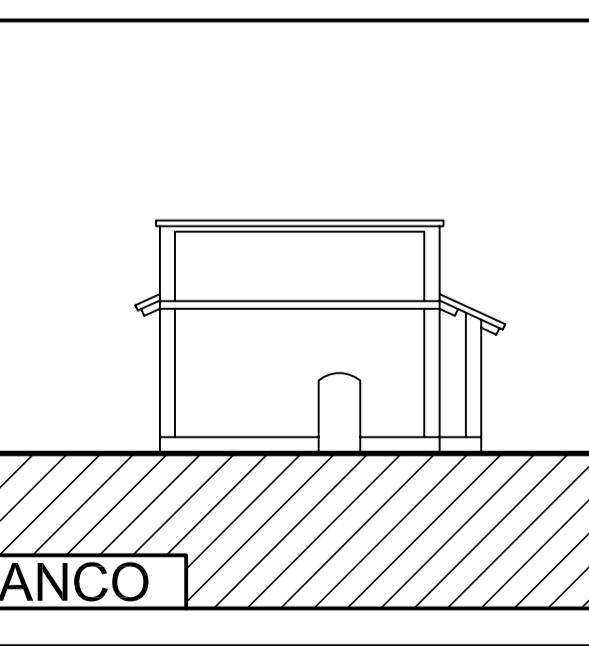
PIANTA



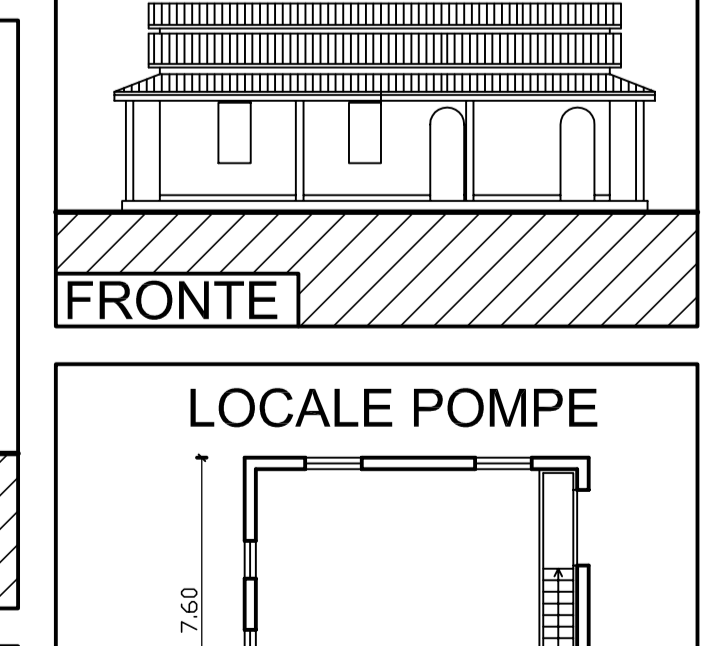
SEZIONE



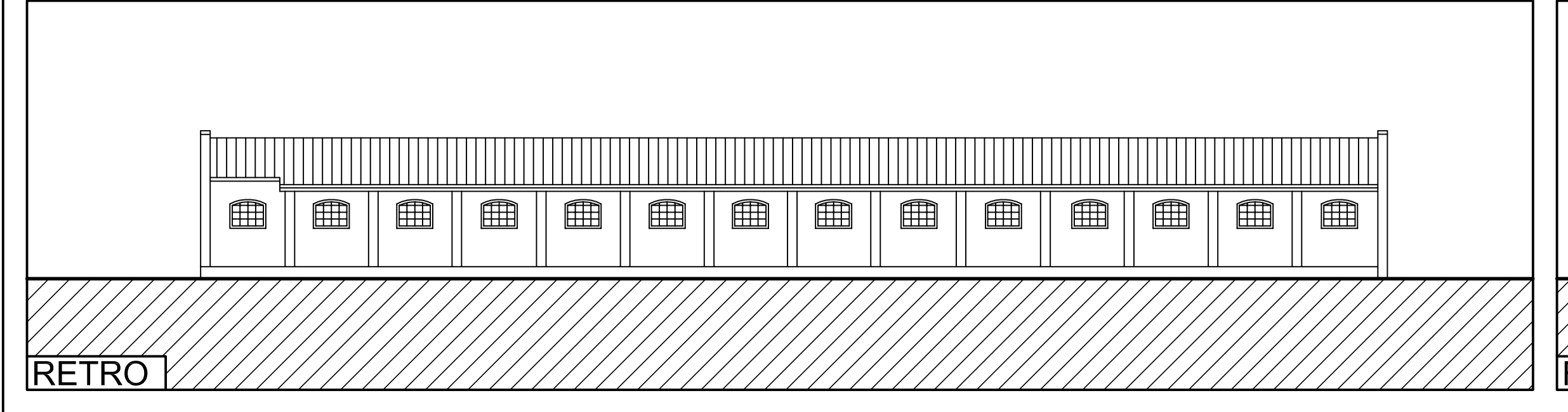
FRONTE



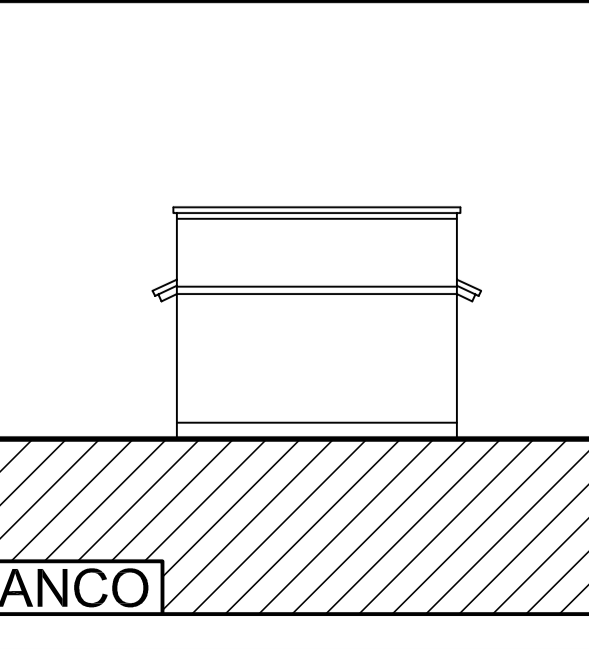
FIANCO



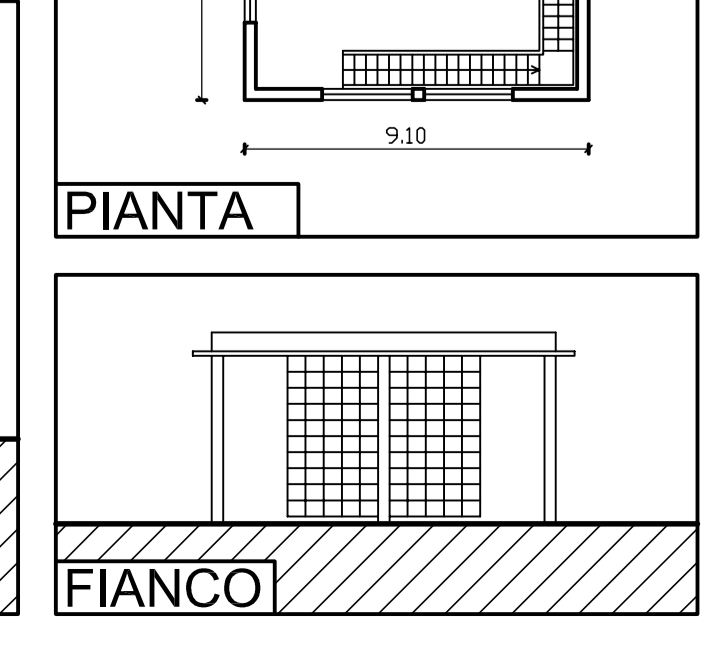
FRONTE



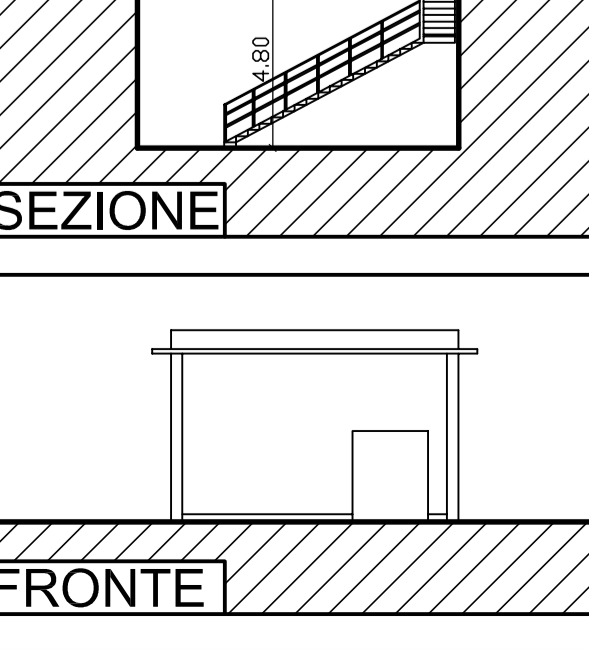
RETRO



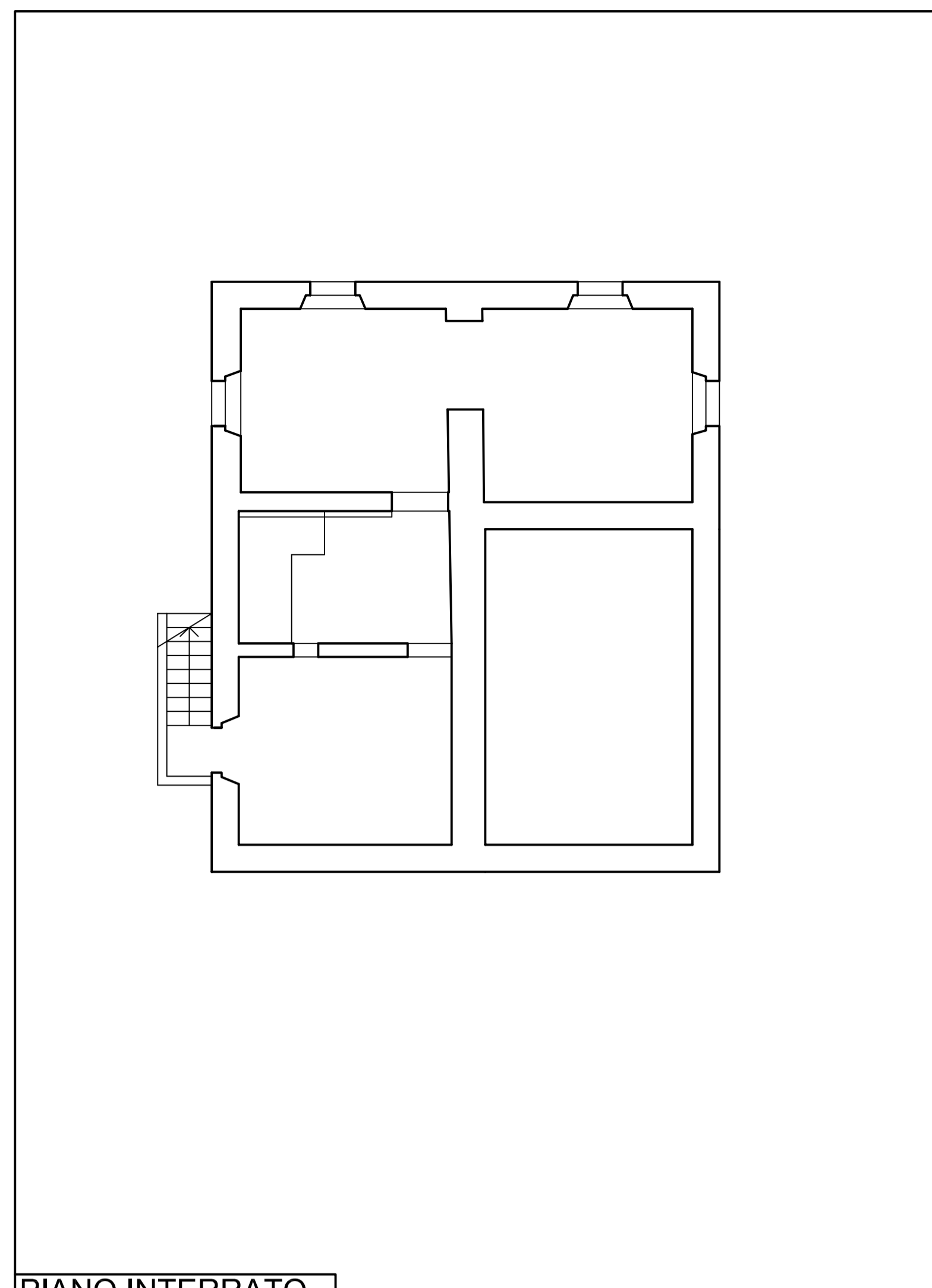
FIANCO



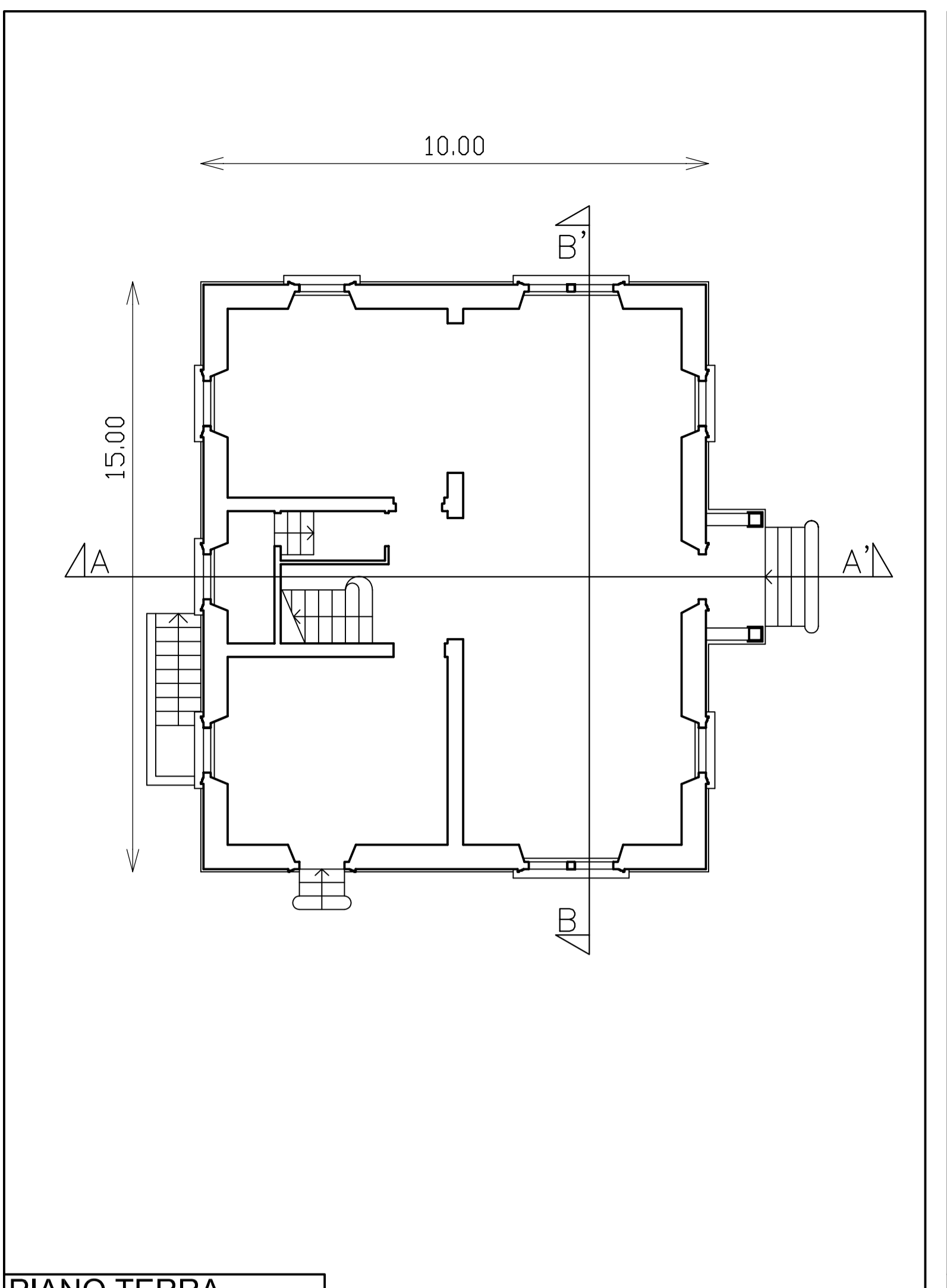
PIANTA



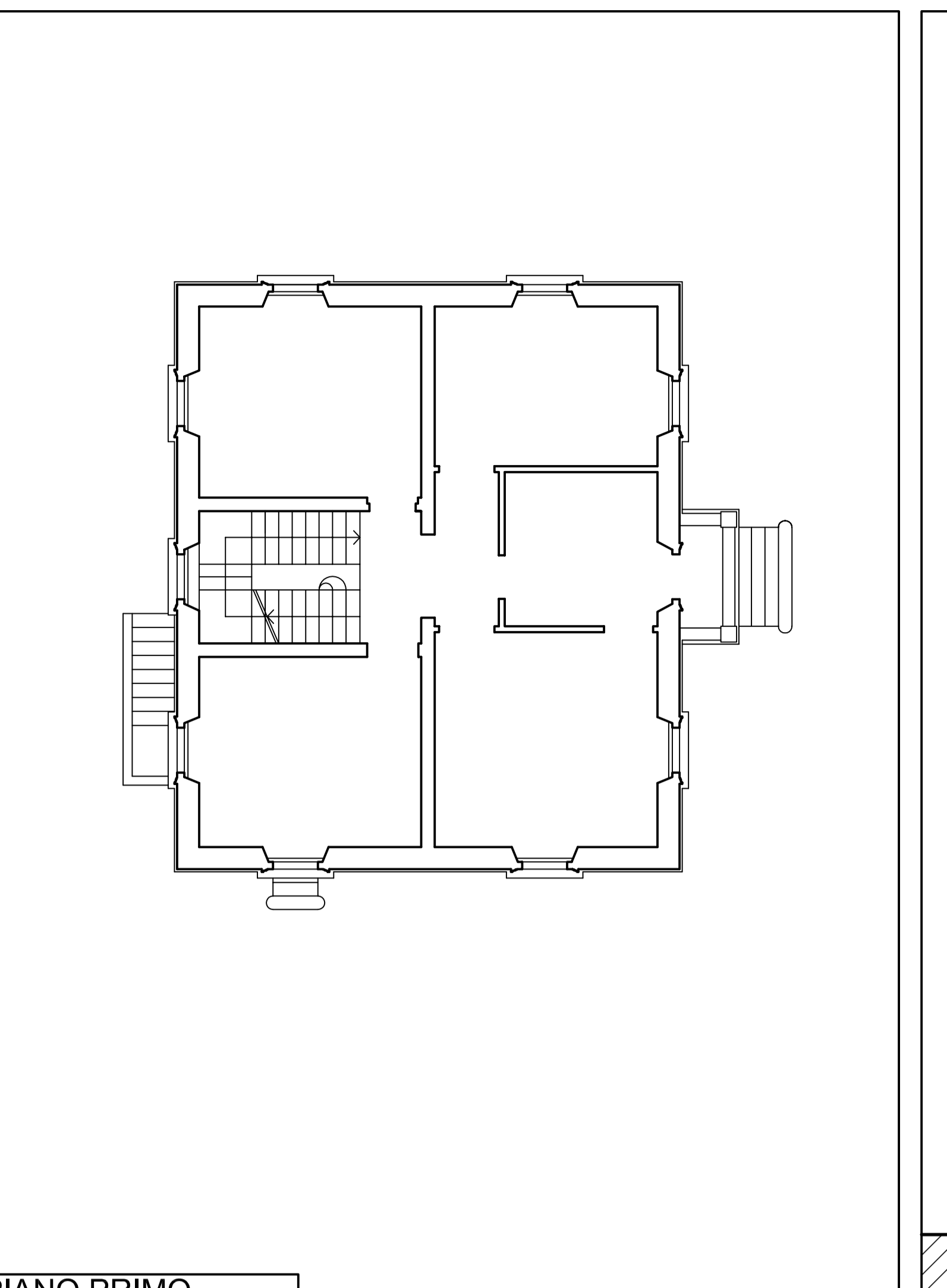
SEZIONE



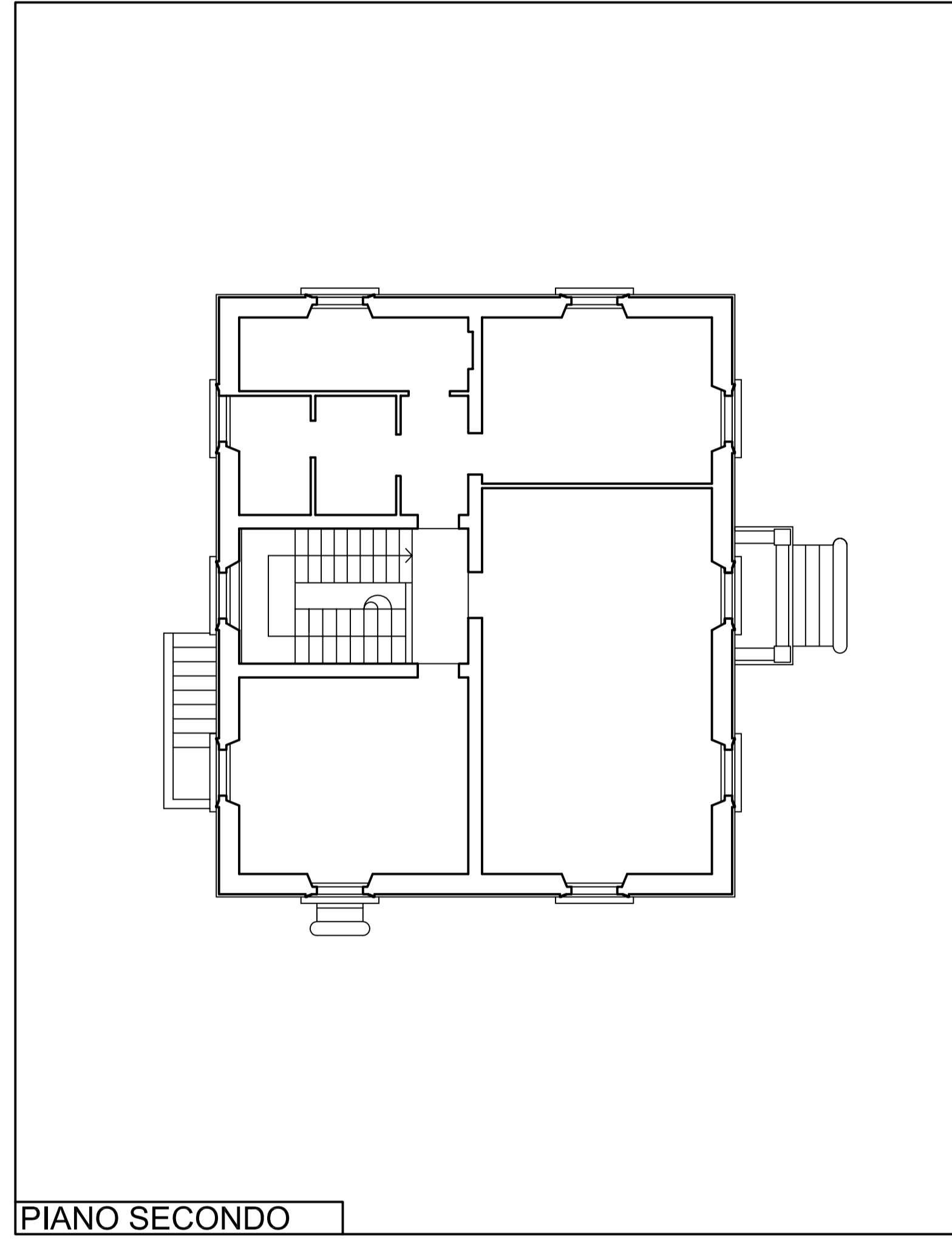
PIANO INTERRATO



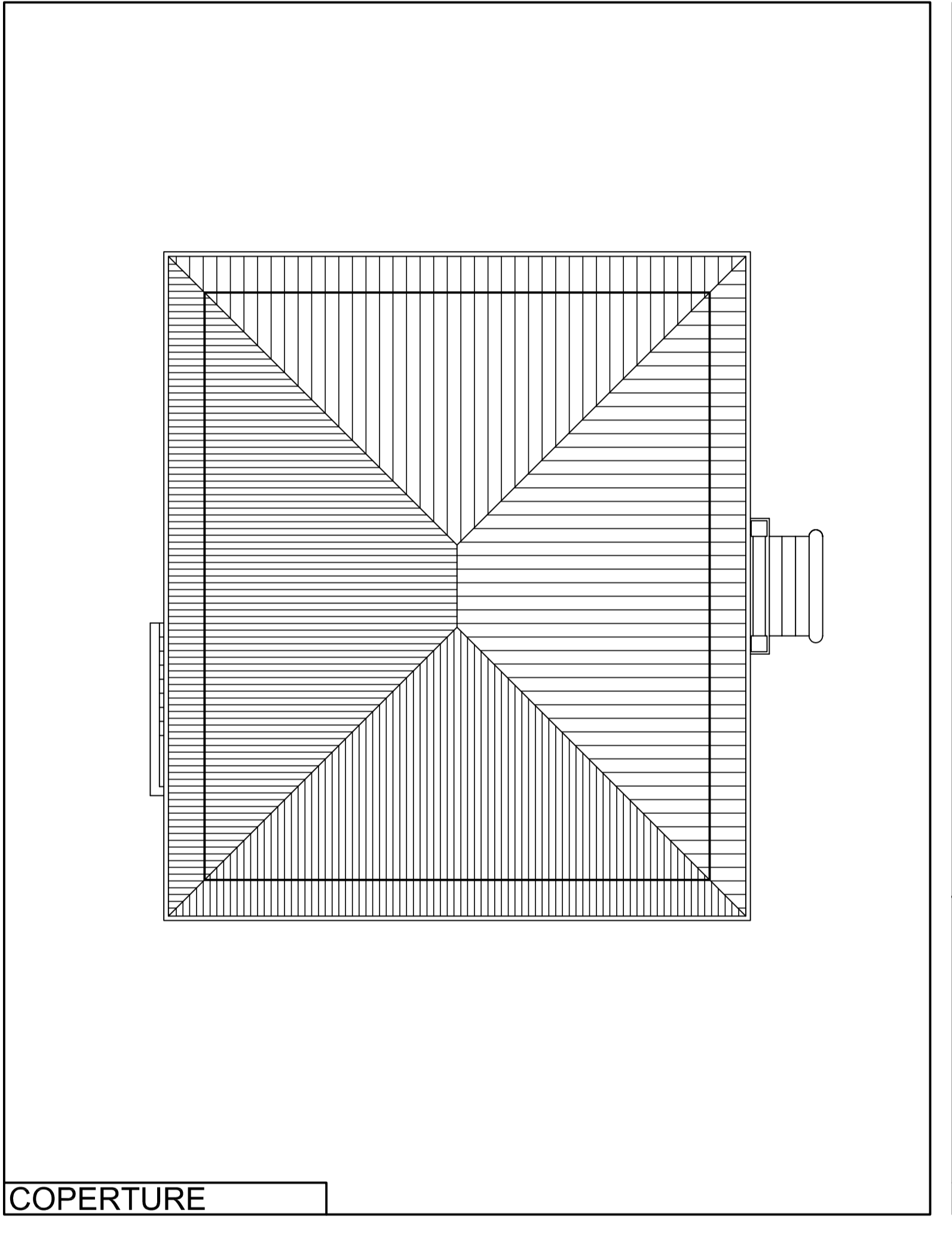
PIANO TERRA



PIANO PRIMO



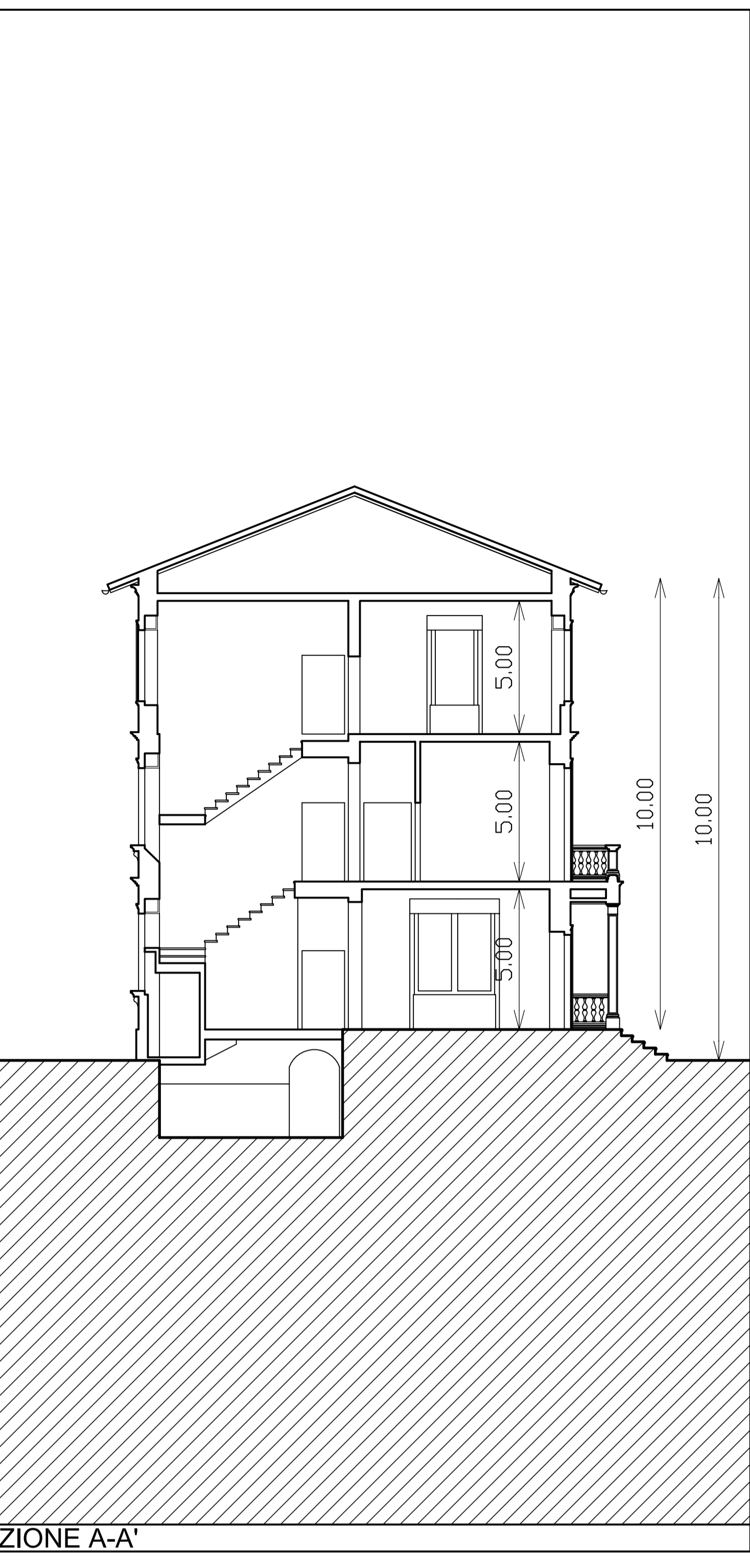
PIANO SECONDO



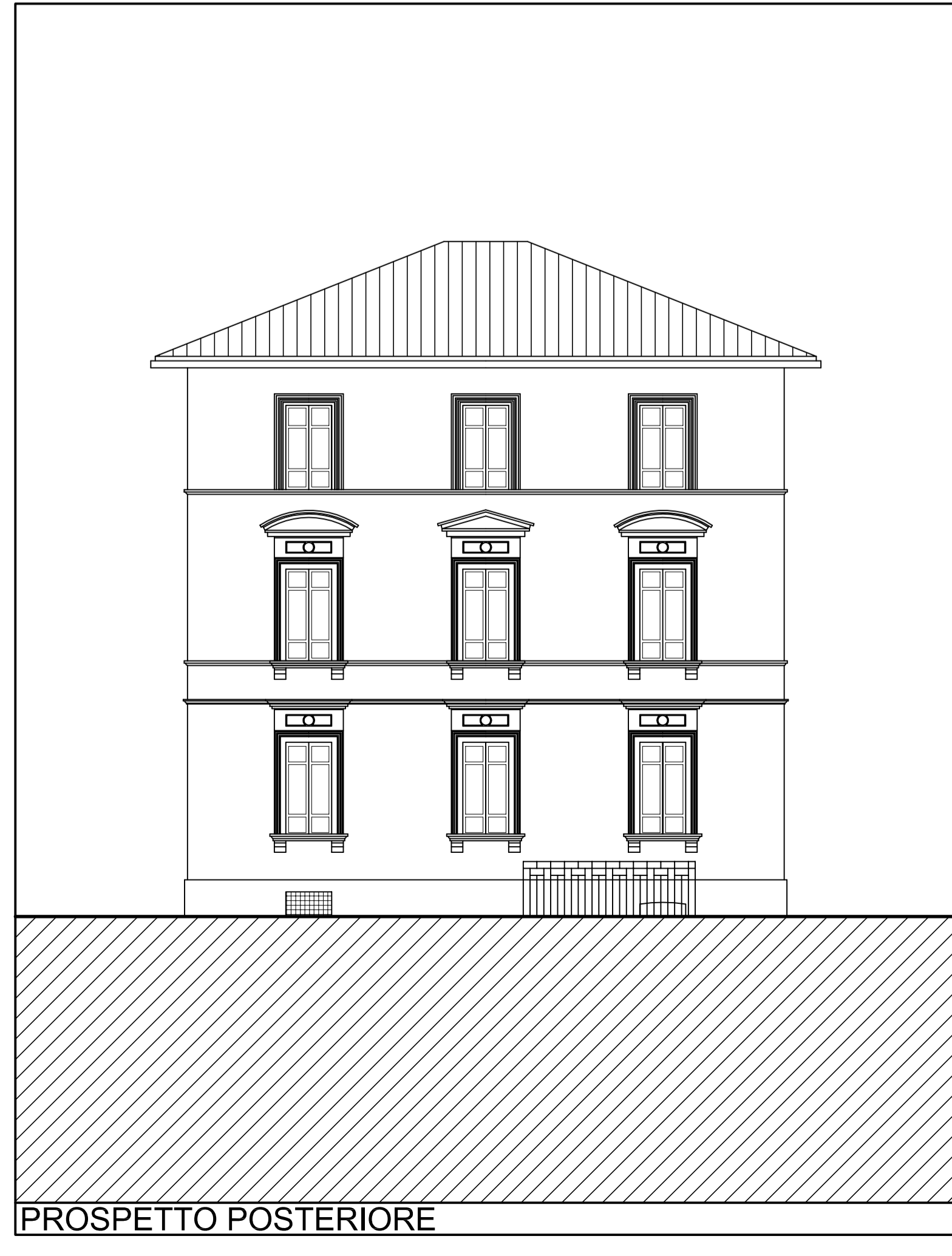
COPERTURE



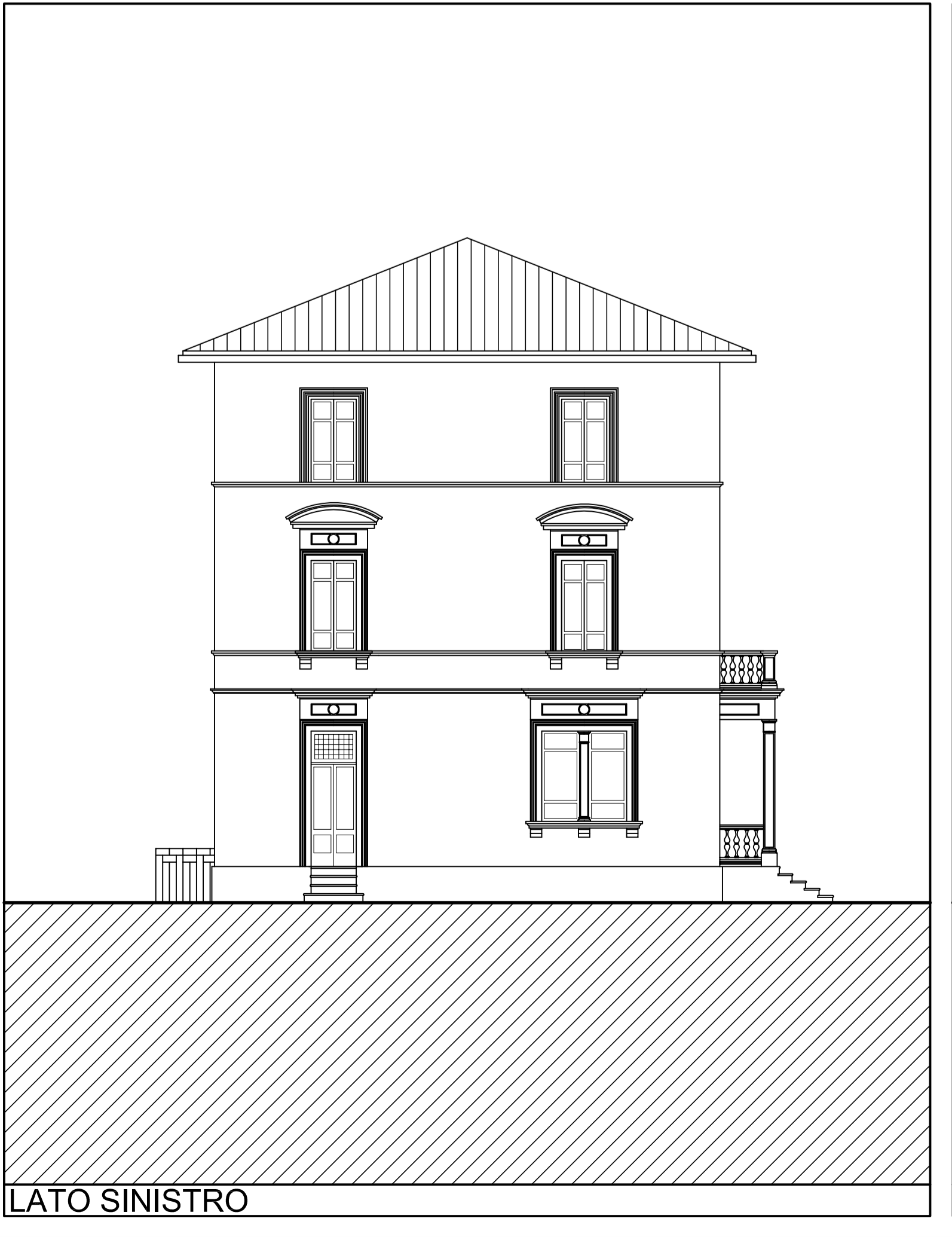
PROSPETTO PRINCIPALE



SEZIONE A-A'



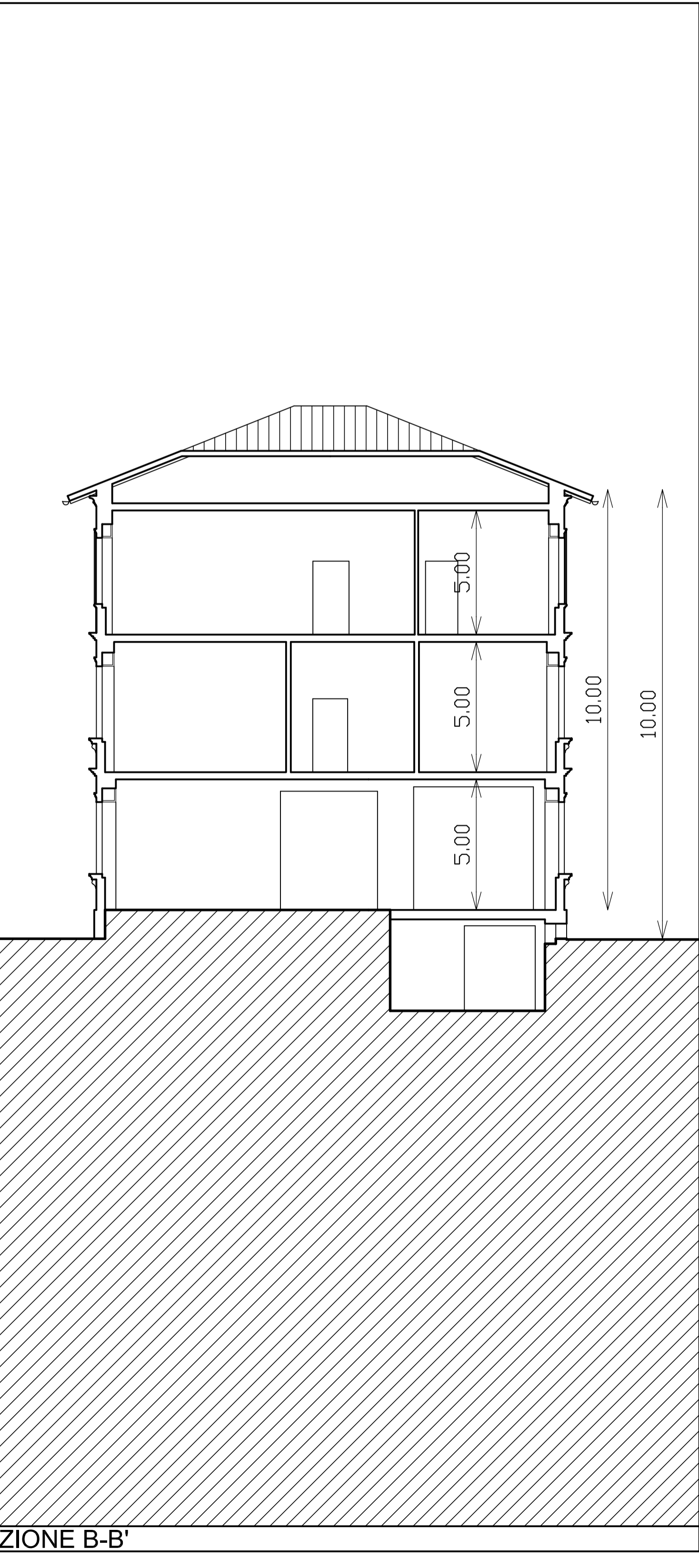
PROSPETTO POSTERIORE



LATO SINISTRO



LATO DESTRO



SEZIONE B-B'